

essential

THE UK'S NUMBER 1 APRIL 2015 £4.25

KITCHEN

BATHROOM BEDROOM

ESSENTIAL
GUIDE
**KITCHEN
SEATING**

*let in the
light*

**40+ PAGES
NEW KITCHEN
EXTENSION IDEAS**

**TOP 10
TRENDS
IN BATHROOMS**

Bright ideas
*Choose the right
bedroom lighting*

DESIGNER Q&As
Kit Kemp, Toni Chi & more...

RUSTIC STYLING | JAMES MARTIN | FRESH FABRICS | KITCHEN INNOVATIONS



CLIVE CHRISTIAN DRESSING ROOM

clivechristianinteriors.com



CLIVE CHRISTIAN KITCHEN

clivechristianinteriors.com



CLIVE CHRISTIAN STUDY

clivechristianinteriors.com





CHARLES
YORKE

Kitchens & Living Spaces

— HANDCRAFTED IN ENGLAND —



For further information
please call
01623 756 080
www.charlesyorke.com





our **new brochure** is out now

to request a copy, visit our website www.masterclasskitchens.co.uk



MASTERCLASS KITCHENS

PREMIER SHOWROOMS

Abingdon	01235 554773	Ingatstone (Brentwood)	01277 350800
Basingstoke	01256 810460	Ipswich	01473 806461
Bristol	01179 246002	Jersey	01534 865750
Cambridge	01223 466634	Leeds	01133 910179
Carmarthen	01267 220900	Lichfield	01543 440020
Cheshunt	01992 643006	Loughton	0208 5081941
Chelmsford	01245 392792	Nefyn	01758 721081
Derby	01332 755434	Northallerton	01609 780289
Dyffryn Ardudwy	01341 242015	Seaton	01297 22559
Eastbourne	01323 642075	Sherborne	01935 817111
Fleetwood	01253 283786	St Asaph	01745 582786
Gloucester	01452 310451	Stratford-Upon-Avon	01789 488899
Godalming	01483 424466	Swanage	01929 422345
Great Barr	01213 573388	Tring	01442 827997
Guernsey	01481 242846	Uttoxeter	01889 565151
Harrogate	01423 862286	Wadebridge	01208 813231
Haverfordwest	01437 763623	Wokingham	0118 9783393
Hazlemere (Bucks)	01494 718585	Wolverhampton	01902 874200
Hereford	01432 279738	York	01904 479792
Horley	01293 786116		



GREAT BRITISH KITCHENS

RAFA NADAL

DEKTON. UNLIMITED.

INDOOR & OUTDOOR SURFACES

COLOUR AURA NATURAL Collection

In order to become the number one in the world
you have to play unlimited, you have to win
on all surfaces indoors and out.

For this reason, Dekton aspires to always be at the edge
It is the number one option for indoor kitchens and bathrooms
and outdoor surfaces of all kinds.
Its physical features make it resistant, durable, aesthetic and versatile.

DEKTON IS UNLIMITED.

HIGHLY SCRATCH-RESISTANT
RESISTANT TO STAINS
MAXIMUM RESISTANCE TO FIRE AND HEAT

 **DEKTON**[®]
designed by **COSENTINO**

COSENTINO UK- CENTRAL OFFICES AND LONDON CENTRE
Unit 10 Bartley Point/ Osborn Way/ Hook/ Hampshire/ RG27 9GX/ HQ: info.uk@cosentino.com

COSENTINO PATROCINADOR OFICIAL
RAFA NADAL
ACADEMY

Welcome

to the April issue

Unless you have nerves of steel and a never-ending budget to match, few can put together a radically new interiors scheme with complete self confidence. Whether it's that nagging voice reminding you of resale value and over-capitalisation, or the fact that there are too many options out there to consider, when it comes to new design projects the experience of a professional is almost always golden. Our case studies in this issue all reflect this. From the tale of an East London family who extended their kitchen in order to make space for an added bedroom (**Light and Inviting**, page 46) to the three sets of couples who successfully reconfigured their houses in order to open their kitchens to the garden and views beyond (**Island View**, page 26, **Front to Back** page 36 and **Another Level** page 56), all of this issue's schemes were greatly enhanced by the design experts and kitchen specialists who advised.



On that note, how many times have you sat with friends in their new kitchen and they have bemoaned the fact that they didn't leave enough room at the island for all the bar stools they needed, or that their dining table is just a smidge too large for their newly created open-plan space? With so much focus on the cooking engine of the kitchen, too often are the all-important seating arrangements left until last, which is why we've called on the professionals for their design advice again in our **'Take a Seat'** feature (page 84). We also interview hotel interior designers **Toni Chi** (page 112) and **Kit Kemp** on (page 162), and if that wasn't enough design inspiration for you all wrapped up in one magazine, turn over to page 116 for our round-up of the current top 10 bathroom trends and for bedroom lighting inspiration in **Bright Ideas** (page 138).

It's certainly a stylish spring for interiors and we hope you enjoy the issue.

Ciara

Ciara Elliott
ACTING EDITOR

Contributors this issue



Gareth Gardner

Gareth is a photographer and journalist specialising in architecture and design. He regularly shoots luxury bathroom specialist TOTO's projects in the UK, including the Rosewood hotel which is featured in this issue on page 112.



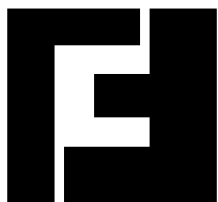
Victoria Rolison

'I loved writing about the beautiful DesignSpaceLondon kitchen this issue (page 68)' says freelance writer Vicky. 'As a mum, it combined two elements at the top of my own wish list; cool quirks with clever ideas for concealing clutter.'



Anthony Parkinson

Anthony developed his passion for photography in Africa, South America and Mongolia on assignment for expeditions and as a photojournalist. He took the photos for our **Interior Designer Kitchen** feature on page 68.



CHAMBER FURNITURE

To truly appreciate our Kitchens, Bedrooms
Studies and service please visit our showroom
Monday to Friday 9-5.30 and Saturday 9-2

If you would like to discuss your project with
a designer or to request our latest brochure
please call 01959 532 553 or visit our website.

The Old Timber Yard, London Road, Halstead, Kent, TN14 7DZ
t. 01959 532553 f. 01959 534053 w. chamberfurniture.co.uk



Contents

EKBB APRIL 2015 ISSUE 228



essential kitchens

- 17 KITCHEN NEWS
Exciting new products, showroom launches and key diary dates
- 26 ISLAND VIEW
This newly extended home in the Devon countryside bathes in natural light, offering space for the whole family
- 36 FRONT TO BACK
Inspired by a new garden, this kitchen was reconfigured to the rear of the house to maximise the view
- 46 LIGHT & INVITING
A new home extension makes room for an open-plan kitchen featuring painted cabinets and accents of oak
- 56 ANOTHER LEVEL
Inside this Victorian home a large extension, soaring glass wall and apex roof offer modern flair and function
- 68 INTERIOR DESIGNER KITCHEN
This bright kitchen-diner ticks all the boxes for fast-paced family life
- 75 ESSENTIAL STYLE
Refresh a cream palette by teaming with natural materials and sweet patterns
- 80 FACTORY FLAIR
Inject industrial style into a country kitchen with vintage metal accents
- 82 A DECORATIVE FEAST
Jazz up your place settings with our favourite patterned dinner plates
- 84 TAKE A SEAT
Be inspired by this selection of on-trend kitchen seats, stools and benches



on the cover

Flat fronted Shaker cabinetry in soft grey and a hidden utility area by Bryan Turner. See page 56.
PICTURE PAUL CRAIG
■ cover stories

essential technology

- 98 TECHNOLOGY NEWS
Let us inspire your shopping choices with the newest home technology
- 102 AHEAD OF THE GAME
Discover the future of kitchens as we show you the latest combinations of design and technology now available

essential bathrooms

- 110 BATHROOM NEWS
Our round-up of the latest bathroom tiles, basins, tapware and furniture
- 112 INTERIOR DESIGNER BATHROOM
See how an internationally renowned designer has transformed the private suite in London's Rosewood hotel
- 116 DESIGN DIRECTIONS
Take a look at these inspiring ideas in our top 10 bathroom trends feature
- 128 CLEAN SLATE
Make an impact with a monochrome bathroom and minimal styling
- 130 SILVER LININGS
Keep everything neat and tidy with our choice of chrome accessories

essential bedrooms

- 135 BEDROOM NEWS
Our edit of the latest bedroom furniture and new-season textiles
- 138 BRIGHT IDEAS
We help you choose a lighting scheme for the bedroom, with luxury pendants, wall lights and also floor and table lamps
- 146 LIGHTING DIRECTORY
Our round-up of go-to lighting specialists to inspire your décor
- 148 FRESH FINISH
Dress a wooden bed with velvet and silk textiles, using a spring colour palette
- 150 NATURAL WORLD
Our selection of on-trend, richly patterned fabrics with a botanical theme

essential interviews

- 94 KATHARINA EISENKOECK
Katharina creates objects with sculptural simplicity from concrete and leather
- 100 JAMES MARTIN
This popular TV chef picks his favourite appliance and tells us about his new cookbook and latest restaurant opening
- 162 KIT KEMP
Interior designer Kit chats to us about her ambitious Ham Yard Hotel project and her design influences

essential regulars

- 152 COMPETITION
- 153 SUBSCRIPTIONS
- 154 STOCKISTS



EDITOR
Charlotte Coward-Williams
ACTING EDITOR
Ciara Elliott
ASSISTANT EDITOR
Emma Foale
STAFF WRITER
Lucy Macdonald
SENIOR EDITORIAL ASSISTANT
Kirsten Jones
DESIGNER
Teresa Walker
PRODUCTION MANAGER
Reg French

CONTRIBUTORS THIS ISSUE
Darren Chung, Paul Craig,
Gareth Gardner, Hayley Gilbert,
Anthony Parkinson, Victoria
Rolinson, Yuki Sugiyama, Susan
Springate, Amelia Thorpe

ADVERTISING MANAGER
Lenka Kourkoumpa
SENIOR SALES EXECUTIVE
Dean Buckingham
NEW BUSINESS
Inayah Cooksley
CLASSIFIED SALES
Victoria Jennings
MANAGING DIRECTOR
Luke Patten
COMMERCIAL DIRECTOR
Darren Summerfield
FINANCIAL CONTROLLER
Lesley Shard
SUBSCRIPTIONS Tel: 01778 392471

BurdaInternational UK
The Tower, Phoenix Square,
Colchester, Essex CO4 9HU
www.hubertburdamediauk.com
Tel: 01206 851117 Fax: 01206 849079

INTERNATIONAL ADVERTISING ENQUIRIES
Burda International
Italy Mariolina Siclari
Tel: +39 02 91 32 34 66
mariolina.siclari@burda.com

Burda Community Network
GERMANY Vanessa Noetzel
Tel: +49 89 9250 3532
vanessa.noetzel@burda.com
Michael Neuwirth
Tel: +49 89 9250 3629
michael.neuwirth@burda.com
AUSTRIA/SWITZERLAND
Goran Vukota
Tel: +41 44 810 21 46
goran.vukota@burda.com
FRANCE/LUXEMBOURG
Marion Badolle-Feick
Tel: +33 172 71 25 24
marion.badolle-feick@burda.com
USA/CANADA/MEXICO
Salvatore Zammuto
Tel: +1 212 884 48 24
salvatore.zammuto@burda.com

Reproduction Essential Repro | Printing Wyndeham Herons | Distribution Marketforce Tel: (020) 3148 3300.

Reproduction in whole or in part without written permission is prohibited. All rights reserved. Dates, information and prices quoted are believed to be correct at time of going to press but are subject to change and no responsibility is accepted for any errors or omissions. Neither the editor nor publisher accept responsibility for any material submitted, whether photographic or otherwise. While we endeavour to ensure that firms and organisations mentioned are reputable, the editor can give no guarantee that they will fulfil their obligations under all circumstances. © Hubert Burda Media UK 2015



LAURA ASHLEY

lauraashleybathroomcollection.com



FURNITURE • SANITARYWARE • BRASSWARE

exclusively by  ROPER RHODES

Available at selected bathroom retailers throughout the UK
Visit our website to find your nearest store



FOR THE WAY YOU LIVE

TOM HOWLEY

EXQUISITE BESPOKE KITCHENS



TOMHOWLEY.CO.UK/KESKB CALL: 0161 848 1200 FOR A BROCHURE. QUOTE CODE K-ESKB25

FREE DESIGN SERVICE

AVAILABLE NATIONWIDE

BRITISH CRAFTSMANSHIP

UNRIVALLED QUALITY

LONDON W1 020 7499 5145
CHELSEA **OPENING SOON**

ALDERLEY EDGE 01625 599 636
ALTRINCHAM 0161 929 5392

BEACONSFIELD 01494 673 443
BRENTWOOD 01277 214 587

BRISTOL 01179 730 981
ESHER 01372 462 378

A MEMBER OF THE NEVILLE JOHNSON GROUP

Kitchens

BESPOKE BEAUTY

*Achieve a modern
farmhouse look
with a butler sink,
painted cabinetry
and wood surfaces*

The Classic English Kitchen is
priced from £25,000, devOL

FAMILY-SIZED SPACES • KITCHEN EXTENSIONS • LATEST NEWS

PORCELANOSA

TILES · BATHROOMS · KITCHENS · HARDWOOD

f YouTube B Pinterest Blog Instagram
WWW.PORCELANOSA.COM



PORCELANOSA Grupo

FLOOR TILES: Antique Blue 59,6X59,6 cm - KITCHEN: G575 Blanco Brillo / Marron Brillo

CERAMICS · NATURAL STONE · WOOD PARQUET · TERRACOTTA · MOSAICS · KITCHENS · BEDROOM FURNITURE · HYDROMASSAGE
BRASSWARE · SANITARYWARE · TECHNICAL SOLUTIONS

SOUTH EAST
08444 818951

SCOTLAND
01415 331000

NORTH WEST
01925 237807

YORKSHIRE
01302 304713

MIDLANDS
01217 466464

WESTERN
01179 597151

Kitchen News

The latest launches and inspiration-packed events

WRITTEN BY EMMA FOALE



Pur-FS/ Topos cabinets in madeira ash grained veneer combined with a dark grey/brown stain storage system. This is contrasted with white handleless PUR-FS fronts finished with a 12mm white solid surface worktop. From £15,000 at Leicht

Going with **THE FLOW**

At the top of many a wish list these days is a seamless space that incorporates kitchen and living areas. Key to this look is sleek cabinetry which blends with your furniture and also closes to hide away any clutter. The new sliding door storage system available from Leicht does just this – it offers plenty of easily accessible wall storage for crockery and glassware and also looks great in a wood grain finish. leicht.com.

Style INFUSION

If you're looking for beautiful ceramicware, check out the online Japan Store which is part of the latest collection by British-Japanese designer Reiko Kaneko. The ceramics in her first collection are sourced from Mashiko, North of Tokyo, where there is a long tradition of ceramic craftsmanship. From £14 for the rectangular plate. reikokaneko.co.uk.



TAPPING INTO **DESIGN**

More than just a tap, the 3N1 tap from InSinkErator gives you filtered steaming, hot and cold water. The design is now available in three new finishes including Natural Stone, Orange and Pearl White. This tap is also available in chrome and brushed stainless steel finishes. From £799 each. insinkerator.co.uk.



ALL IN THE SHINE

A square main bowl and SteelArt satin polish finish are distinctive features of the new Jaron XL 6 S-IF SteelArt sink from Blanco. It's a great choice if you want to achieve a sleek look as it has a flat rim that will ensure it sits almost flush to your work surface. A handy food board with a walnut finish and drainer with wide tap ledge in the centre are also appealing and practical features. The Jaron XL 6 S-IF SteelArt sink (*shown*) is priced from £1,104. blanco.co.uk.



“A kitchen collection
that’s designed
for modern
British living.”

George Clarke
Architect, Writer, Lecturer
and TV Presenter.

Combining inspired British design, ingenious storage solutions and a wealth of options and styles, The Very British Collection makes it easy to create a kitchen that fits your space, and your way of living, beautifully.

Visit theverybritishcollection.co.uk to find your local retailer.

MACKINTOSH®  SHERATON®  CHIPPENDALE®  ENGLISH ROSE®

PART OF
THE VERY BRITISH
COLLECTION



Modern TWIST

Clever technology and design innovations mean kitchens are becoming more adaptable to contemporary living. This is true of the newly launched Cadre kitchen from Rational. Shown here in Ash heartwood veneer and Artic white soft lacquer, it has 13mm slim framed door, a pull-out worktop and black glass wall unit doors. Kitchen prices start from around £10,000. rationalgb.com.



Let's do BREAKFAST

Expanding on his Dressed collection, Dutch designer Marcel Wanders has added a line of breakfast pieces which are available from Alessi. The egg cup (*shown*) is made from thermoplastic resin in yellow and it comes with a small, stainless steel spoon which has a hammer on the other end to help crack the egg. £17. alessi.com/en.



The dark side

Practical and unlikely to ever go out of fashion, black is a great choice for walls and floors. In terms of natural stone, Lapidica offer a range of bespoke services with new and reclaimed stones including granite, limestone and slate. The nature of the tone and texture adds to the beauty of this surface material. From £72 per sq. m. lapidica.com.

Adding to her adorable Animal collection of ceramics and stationery, Fenella Smith has yet again won over our hearts with her latest design featuring a rather obedient-looking Golden Retriever. Now the only tricky decision is choosing whether you want to get the coordinating set or mix and match with some of the other quirky animal designs. Prices start from £14.50 for the mini mug. fenellasmith.com.

WOOF WOOF



Well DRESSED

Bramley Blue by Laura Ashley was launched last year and now six new cabinet pieces have been added to the collection. Inspired by salvaged cottage furniture, we love the distressed finish and this display cabinet, £1,200, offers plenty of space to show off your finest glassware and tableware. There's also an armoire, bookcase, bureau and storage unit. lauraashley.com.



DINNER O'CLOCK

The Dinner Time plates were originally designed as a playful approach to teaching children to tell the time. Keeping it simple in black and white, the plates are available in four designs including Zurich, London, Vienna and Moscow. It's £62.50 per set. aboveandbeyond.london.



INTERACTIVE EXPERIENCE

New to Bancroft Road in Reigate, Surrey, RDO Kitchens and Appliances has launched its much-awaited Stoneham Kitchen Studio. Inside there's not simply the kitchen set-ups but also allocated space for design consultations and cooking demos. Kitchens start from £20,000. stoneham-kitchens.co.uk.



ADAPTABLE LIVING

On-trend and versatile, the Emotions® collection by Gamadecor has a palette of finishes that will suit various styles and spaces. From smooth or textured laminates, matt or shining lacquer and natural wood, your kitchen can take on your favoured appearance. Laser technology is also used for the panel edgings for durable and seamless joins. Prices on application. porcelanosa.com/gb/.

Exotic INFLUENCE

Inspired by the shape of Egyptian date palm trees, these decorative hand-painted wall tiles are sure to catch your eye. They're made from ceramic and hard stone and they come in blue and turquoise colours that give them a very luxurious finish. They're priced from £2,000 per sq. m. deferranti.com.



Eclectic styling

Fresh from the spring summer collection at Toast, we've picked out the Kara stools as our favourite. In a choice of Lemon, Blue, Jade and Pearl Grey shades, they'll add a quirky look if placed around an island or dining table. £119 each. toa.st.

MY LIFE
DESIGN
STORIES



Poliform

Senzafine Fitted wardrobe design Rodolfo Dordoni. Mad Chair armchair design Marcel Wanders.

to find
your nearest
showroom

Poliform UK Ltd
276-278 Kings Road London
SW3 5AW, tel 0207 368 7600

Design Centre
Chelsea Harbour
SW10 OXE, tel 0207 352 0064

Poliform North
Victoria Avenue, Harrogate
showroom@poliformnorth.co.uk

Contact us for our free
design service
www.poliformuk.com

DIARY DATES

Make Yourself Comfortable at Chatsworth House

Chatsworth, home to the Duke and Duchess of Devonshire, will showcase the best in contemporary chair design at this exhibition. Items from this prestigious family's collection will be showcased alongside furniture by internationally acclaimed and innovative designers. There will also be the opportunity to get involved and to make the most of the visit while you sit, take part in and enjoy this design exhibition. chatsworth.org.

WHEN? 28th March – 23th October

WHERE? Chatsworth, Bakewell, Derbyshire, DE45 1PP

© Chatsworth House Trust



Ceramic Art London

Celebrating its 11th edition this year, this fair will take place at the Royal College of Art. 80 ceramic artists from across the world will be presenting their work and you'll be able to buy pieces directly from the makers. Prices will range from £30 to £10,000. A lively programme of free events will also be staged on each day of the fair. ceramics.org.uk.

WHEN? 17th – 19th April

WHERE? The Royal College of Art, Kensington Gore, London, SW7

© Courtesy of Ceramic Art London



The National Homebuilding & Renovating Show

This year the show will have a record number of over 15 self-build, renovation and home improvement specialists who will be on-hand for advice. Celebrity names to look out for include sustainable architectural designer Charlie Luxton and interior design expert Julia Kendell. homebuildingshow.co.uk.

WHEN? 26th – 29th March

WHERE? NEC, Birmingham

OPENING SPACES

Tom Howley has just opened the doors to its latest showroom in Bristol. It is showcasing a range of bespoke and hand-painted designs with a mix of both modern and traditional kitchens. The Hartford (*shown*) is a focal point with the introduction of an island painted in Dewberry, a deep grey hue. It is combined beautifully with dark oak and Lyra polished Silestone. Kitchens start from £35,000. tomhowley.co.uk.



LIGHT & SHADE

To celebrate 10 years since its launch, Louis Poulsen has updated the Collage pendant with a series of new colours and a new matt velour-like finish. The three-layer shade creates interesting shadow patterns and light is diffused to create a welcoming ambience. From £610 each. louispoulsen.com.



ALL THE ESSENTIALS


From storage containers and measuring jugs to chopping boards and utensils, you don't want to start cooking at home without these essential accessories for your new kitchen. You'll find a beautiful selection from Scandinavian brand House Doctor. Prices start from around £3 for the wooden spoons. en.housedoctor.dk.



PAWS FOR THOUGHT

This adorable pooch is Billie and he makes his début in the first ever plain china range from Cath Kidston. He sits atop a cake stand, versatile jars and a butter dish and also has his own figurine salt and pepper shakers. Prices start from £12 for the toast rack. cathkidston.com.





MY LIFE
DESIGN
STORIES

Poliform | Varenna

to find
your nearest
showroom

Poliform UK Ltd
276-278 Kings Road London
SW3 5AW, tel 0207 368 7600

Design Centre
Chelsea Harbour
SW10 OXE, tel 0207 352 0064

Poliform North
Victoria Avenue, Harrogate
showroom@poliformnorth.co.uk

Contact us for our free
design service
www.poliformuk.com



Miele

AGA

SUB-ZERO

WOLF



DAVONPORT

Naturally Distinctive Interiors

EXPERIENCE CLASSIC
ENGLISH ELEGANCE



HANDCRAFTED IN
COLCHESTER, ENGLAND

davonport.com

25
YEAR
GUARANTEE



To request a portfolio or speak to
a designer: 01206 760 800



PEARL SHADE

An AGA in Pearl Ashes
is framed by bespoke
flat-fronted cabinetry,
painted in Grey Teal



Island View

Mary-Anne and Michael Driscoll extended to create a spacious and streamlined kitchen - as well as to make the most of the spectacular views of the Devon countryside

PICTURES **PAUL CRAIG** | WORDS **AMELIA THORPE**



A few years ago, London-based Mary-Anne Driscoll and husband Michael, bought a bolthole in Devon as somewhere to escape at weekends. Often joined by family – they have six grown-up children between them – they found themselves spending an increasing amount of time there. ‘But the cottage just wasn’t big enough and, as we love having family and friends to stay, we wanted somewhere with more space,’ recalls Mary-Anne.

Then their neighbours decided to put their large house on the market. So Mary-Anne, who works part-time as a leadership coach, and Queens Council Michael quickly snapped it up. Built as a gentleman’s residence in 1903, the house also has an annexe, and a total of nine bedrooms, making plenty of guests ever-welcome. Perfect, except that the kitchen was small and dark. ‘I have one son who used to be a chef and all of us love to cook, often at the same time, so we definitely needed a larger kitchen,’ explains Mary-Anne. ‘I wanted to make the room a social space, where we could all chop, stir and wash up at the same time.’

Architect Louise Crossman drew up plans to add on an extension with vaulted ceiling and soaring glass windows, affording spectacular views over the garden and the beautiful Devon countryside beyond. The new room was designed to accommodate a spacious cooking area, plus breakfast table. ‘I’m a very keen gardener, so I wanted to be able to sit at the table, think about the garden design and watch the birds,’ continues Mary-Anne.

It was Louise who recommended kitchen specialist, Guild Anderson, and discussions with designer and director Nick Anderson began. And what was first on Mary-Anne’s wish list? ‘An AGA, for its warmth and the welcoming atmosphere it creates, plenty of work surface, and a layout that works well with a crowd, just as it does for two of us,’ she says. ‘Nick was very good at making sense of this, while creating a design with just the right level of modern simplicity that makes the view the most stunning feature.’ **PKBB**





**AR OOM
WITH A VIEW**
The windows look out
over fields and hills
which stretch long
into the distance



SUGAR AND SPICE

Iris and Sylvie, daughters of Mary-Anne's friends, enjoy their weekend in Devon with some baking. Sylvie readies the ingredients, above, while Iris reaches into the solid oak provisions rack, below



UNDER THE EAVES


Underneath the vaulted ceiling, the grey cabinetry creates a simple, streamlined look



SIDELINED

Mary-Anne bought this painting from a gallery in Kuala Lumpur. Here, it rests on a bespoke sideboard, made by Guild Anderson in white oiled oak with contrasting wenge handles

'I wanted to make the room a social space where we could all chop, stir and wash up at the same time'



*'It is very important that an AGA has a home – it can
look out of place in a long run of furniture'*

BUILT TO LAST

The worktops are made
of 30mm Silestone Blanco
Norte quartz, which is both
hardwearing and non-porous



SIMPLE PLEASURES

The back-painted glass splashback and gentle off-white quartz worktop provide simple, light contrast against the Teal Grey painted cabinetry



Kitchen profile

Bespoke handleless lacquered cabinetry in Little Greene Grey Teal 226 features smart, linear and flat-fronted design and traditional construction. Topped with Silestone Blanco Norte quartz worktops, the furniture sets a modern mood which contrasts with the three-oven, electric AGA, perfect for this country setting.

GUILD ANDERSON

Berwick Hill, Berwick St Leonard,
Salisbury, Wiltshire, SP3 5SN.
Tel 01747 820449.
guildandersonfurniture.co.uk
Kitchen prices from £25,000



NICK ANDERSON
DESIGNER AND
DIRECTOR, GUILD
ANDERSON



Can you tell us about the design of the furniture?

The cabinetry is simple and clean, in keeping with the brief from Mary-Anne and Michael. It is flat-fronted and handleless, creating a modern, streamlined look, which is accentuated by the crisp quartz worktops. Painted in a mid-tone grey, the cabinets are finished with corner posts to define each piece and accentuate the traditionally made feel of the furniture.

And the design of the cabinetry around the

traditional, electric AGA?

It is very important that an AGA has a home – it can look out of place in a long run of furniture, without a frame. Traditionally, an AGA is built into a chimney breast, so I wanted to create a modern take on that idea. Here, the AGA is flanked by two cabinets, then taller ones and a top run across the wall, creating a statement look.

And the island? The length of the island, sink run and its splashback are all the same, creating a precise and contemporary look. The

L-shape of the island allows for maximum prep surface, so several people can cook at once, and we were also able to include an overhang of the worktop on one side to create space for a couple of bar stools. I like to make a clear distinction between the kitchen and dining areas in a room, so here, the kitchen cabinetry comes to a definite stop. Then we switch height and material in the design of a sideboard to begin the dining/breakfast area. Together, the room feels open, light and modern – and nothing fights with that incredible view.

Stockists

APPLIANCES

Electric three-oven electric **AGA** in Pearl Ashes with module, from £9,495, AGA. CM112 **microwave and grill**, £228, Caple. KI82LAF30G integrated **fridge**, £1,344; SN66M031GB fully integrated **dishwasher**, £590, both Siemens. DA2270 built-in **cooker hood**, £725, Miele.

FIXTURES AND FURNISHINGS

Edge **mixer** in chrome, £245, John Lewis. Mode55 undermounted stainless steel **sink**, £235, Caple. Silestone Blanco Norte **worktops**, about £5,900; Back-painted **splashbacks**, priced to order, all Guild Anderson. Similar **floor tiles**, Seashell Tumbled Limestone, £43.18 per sq. m, Mandarin Stone. Knoll Tulip **chairs**, £960 each; Knoll Saarinen round **table**, from £1,560, all Skandium. Series 7 **bar stools**, £534 each; Wardour **dining table**, £4,795; Wishbone oak **chairs**, £588 each, all The Conran Shop. Victo **pendant light**, £630, Holloways of Ludlow. **Wall paint** Grey Teal 226, £43.50 per 2.5 litres, Little Greene.

Architecture Louise Crossman Architects
01392 260490 lcarchitects.co.uk

FOR STOCKISTS, SEE PAGE 154

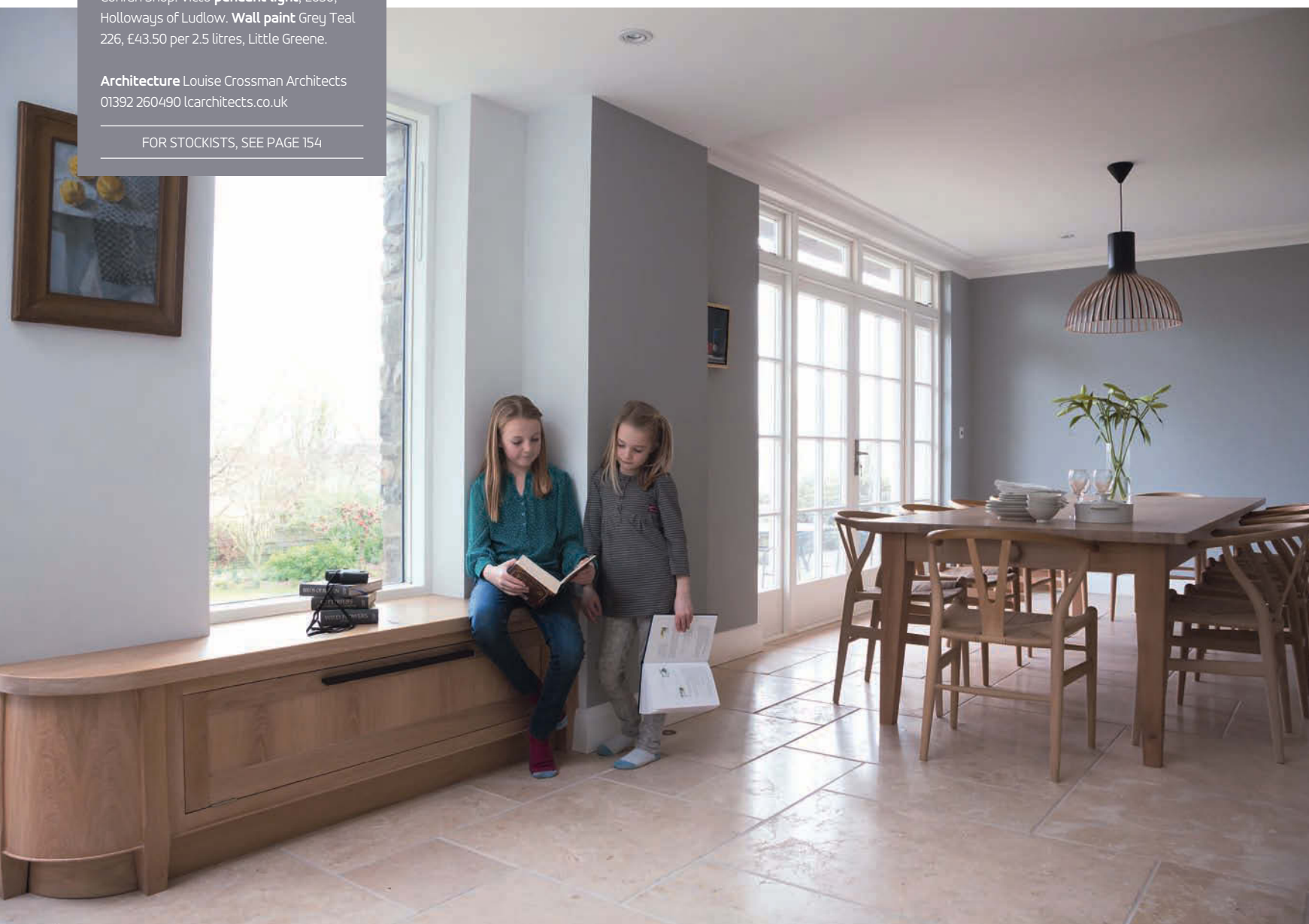


PERFECT HARMONY

Above The kitchen leads on to a more formal dining area, which is housed in the original part of the old Edwardian house. Here, the walls are painted in Teal Grey, to tie in with the kitchen cabinetry as well as to create a harmonious effect

NOOKS AND CRANNIES

Below The window seat, made by designers Guild Anderson, creates a place to enjoy the view through the picture window, and links the dining and kitchen areas. It's constructed of the same white oiled oak as the sideboard by the breakfast table



◆ BRYAN TURNER ◆

Designers ◆ KITCHEN FURNITURE ◆ *Makers*



*Michelin-star chef, Galton Blackiston,
gives our kitchens a rave review.*

Contact us to discuss how we can design your perfect kitchen.

01953 601567

enquiries@bryanturnerkitchens.com

www.bryanturnerkitchens.com

Proud to support



front TO back

Jennifer and Jim weren't afraid to swap things around to create an inviting new space in which to enjoy the best views of their beautiful garden

PICTURES DARREN CHUNG | WORDS AMELIA THORPE

VERSATILE LAYOUT

It was important that the room functioned as well for entertaining as it did for cooking, and also that it had easy access to the garden

ROUNDED OFF

The walnut breakfast bar is immaculately constructed, and almost floats above the panel below





LOOKING UP

Suspended on simple steel rods, the dramatic ceiling feature sweeps across the space, mirroring the curves of the island below



Strange as it might seem, it was the garden that prompted Jennifer and Jim to create their new kitchen. 'We had been talking to a designer about relandscaping, and that made us think about how nice it would be to enjoy the view from our kitchen,' recalls Jennifer. But, with the garden at the rear of their Victorian home in South West London, and the kitchen at the front, that presented a challenge.

'The kitchen was on the lower ground level of the house and it was always dark,' continues Jennifer. 'So we decided to move it to the rear, replacing a rather tired conservatory with an extension, so that we could make one large, light-filled room with beautiful views over the garden.'

She and Jim are parents to three sons, 24, 22 and 19 and a daughter, 17, and they all enjoy welcoming friends into their home. Extended family members are frequent visitors too – Jennifer is from Ireland and Jim is American. 'We love entertaining, so we wanted to create space for a couple of people to be cooking together while someone serves drinks and others are at the dining table,' she says. 'And when the double doors are open in summer, we also wanted there to be an easy flow out to the garden.'

With the work on the new extension underway, Jim spotted a picture of Davonport Furniture by Moneyhill Interiors in this magazine, and contacted designer Richard Stillman. 'We are only the third owners of this house, so we felt it was important to create a kitchen that was sympathetic to its history, but at the same time bringing the design into this century,' says Jennifer. 'Richard understood that at once – and I love the way he has blended classic wooden painted furniture in the kitchen with a stylish and modern mix of materials.'

But for Jennifer, the outstanding feature of the new kitchen is the sweeping, wave-shaped breakfast bar, its dramatic curves echoed in the ceiling feature which houses the flush-fitted extractor. 'As you enter the room, the bar is high enough to conceal the sink and prep area,' she says, 'but most importantly, the beautiful walnut wave creates an instant wow factor.' **EKBB**



THE HEAT IS ON

The rangetop features four dual-stacked sealed gas burners and a griddle/teppan yaki plate. It comes with Wolf's signature red control knobs



FULL BLAST

Space-saving and sleek, the Fusion Round tap dispenses boiling water and regular hot and cold from one spout



Kitchen profile

Bespoke Kensington furniture, crafted by Davonport, is hand-painted in Paint Library Slate III and IV, and teamed with a wave-shaped breakfast bar in walnut and softly coloured worktops of Kashmir White granite. Family-size appliances by luxury brands Wolf, Gaggenau and Miele are designed to make light work of entertaining, while Duo walnut handles add a considered touch to the finish of the furniture.

MONEYHILL INTERIORS

1 Moneyhill Parade, Uxbridge Road, Rickmansworth, Hertfordshire, WD3 7BQ. Tel 01923 773906. moneyhillinteriors.com
Kitchens by Davonport from Moneyhill. Interiors start from £25,000.

LITTLE DETAILS

Duo handles are made of walnut and brushed steel



INSIDE STORY

Walnut drawer boxes are specially finished with the Davonport logo



INSIDE OUT

The kitchen leads on to the dining area and out towards the garden. There is a sheltered outdoor kitchen just beyond the doors

*‘When the double doors are open,
we wanted there to be an easy
flow out to the garden’*



CURVE CONTROL

Kashmir White granite is 30mm thick and features a gently curved profile



WORKING IT

The Olympus mixer with separate spray makes light work of the washing up



RICHARD STILLMAN
SENIOR DESIGNER,
MONEYHILL INTERIORS

What was your brief?

This kitchen needed to sit comfortably in a traditional, Victorian house, but have a contemporary edge. Jennifer and Jim also had a list of American-sized appliances to be included in the room, including a large double oven, range top and fridge-freezer. They enjoy entertaining, so it was important that the room functioned well for cooking and serving meals to a party of guests, with everyone involved in the conversation.

Can you tell us about the layout?

While the cabinetry sweeps around two walls to provide storage, including a large larder, and housing for built-in appliances, with separate drinks station and TV area by the dining table, the island serves as the focal point in the room. The walnut curves of the breakfast bar create a

feature, which is echoed in the suspended ceiling bulkhead. We designed this to house the extractor (basically a hanging chimney model would have obstructed the views of the garden) and add some character to the room. It flows from the cooking zone towards the dining table, at which point the room opens up to the vaulted ceiling with roof lantern.

And the mix of materials?

The classic in-frame cabinetry is painted in a soft grey, with a slightly lighter shade used for the base cabinets to add some subtle interest. The walnut breakfast bar is a rich and warm contrast, picked up again in the choice of handles. And for the worktops? Jennifer chose Kashmir White granite, which is flecked with warm-coloured tones.

Q&A

CHILL ZONE

The drinks area includes a wine fridge, with pull-out under-counter fridge alongside, plus walnut-lined glazed cabinets for glassware

Stockists

APPLIANCES

ICBD030-2U/S-TH built-in double **oven**, £7,188; ICBST364G **range top**, £4,848; both Wolf. RC 472 **fridge** with stainless steel door, £7,340; RF 471 **freezer** with icemaker and stainless steel door, £7,769, both Gaggenau. Similar **microwave**, M6032 SC, £799; KWT4154UG-1 **wine cooler**, £1,850; G6470 SCVi fully integrated **dishwasher**, £1,450, all Miele. UK1550 pull-out under-counter integrated **fridge**, £1,223, Liebherr. Stratus build-in ceiling **extractor**, from £1,392, Westin Design. Fusion Round **boiling water tap** in chrome with Pro7-VAQ tank, £1,420, Quooker. Evolution 200 **waste disposal unit**, £399, InSinkErator.

FIXTURES AND FURNISHINGS

Olympus **mixer** with spray, £870; Belfast BFK 720 **sink**, £555; Rotondo **undermounted sink**, £234, all Franke. Evoline **pop-up socket**, £159, Evoline. Kashmir White granite **worktops**, about £6,000 including fitting, Moneyhill Interiors. Crema Marfil **floor tiles**, from £78 per sq. m, Marble City. Calligaris New York **bar stools**, £521 each, OneDeko. **Lighting** scheme, Light IQ. Centra Twin **pendant light**, priced to order, Vivid Lighting. Similar **dining table and chairs**, from a selection, John Lewis. **Interior design** advice and colour selection, Ana Barreto Interiors.

BUILDING WORK

B8B Property Development 07841 582149

FOR STOCKISTS, SEE PAGE 154

THE DIFFERENCE IS IN THE DETAIL

Visit our website smallbone.co.uk
or call 020 7589 5998



SMALLBONE
of DEVIZES



LIGHT & *Inviting*

Gentle greens and an abundance of daylight combine to create an oasis of this repurposed East London kitchen

PICTURES PAUL CRAIG | WORDS AMELIA THORPE







‘Previously, the ground floor was made up of a series of little rooms - now we have an open space with a light feel’

It all started with a bed. Not a large dining table, new oven or urgent need for more cupboard space – the things that so often trigger the quest for a new kitchen – but an extra bed space needed for a growing family. Explains Rachel Sylvester of the early Victorian house in East London that she shares with husband, Patrick Wintour, and their four children aged 19, 17, 11 and 8: ‘We wanted an extra bedroom, so that each child could have their own space.’ The couple ended up adding a double-height extension across one half of the back of the house, creating the new bedroom and, in the process, making room for the kitchen-dining space downstairs. ‘This was a wonderful bonus,’ says Rachel. ‘Previously, the ground floor was made up of a series of little rooms – and now we have a much more open space with a light and distinctly modern feel.’

The highlight of the extension is the super-size frameless window, which wraps around two sides, blurring the boundaries between inside and out. It was architect Jelena Cousins who designed the new configuration, cleverly reusing the old bricks from the original structure in construction of the new. Even the existing kitchen cupboards, produced by Roundhouse a couple of years before the extension, have been incorporated into the new space. ‘We loathed the idea of throwing them away, so we decided to recycle them and have reused almost all in the new space,’ says Rachel. They went back to Roundhouse to commission additional units to fill the larger room, plus a new island and worktops. ‘It’s a room where we like to cook and entertain, so the island works well – I can be cooking while friends are having a drink sitting on the bar stools,’ she says.

The classic cabinetry is painted in a light green-blue, teamed with accents of oak. ‘Together, they set a calm, restful mood that makes the most of the beautiful natural light in here,’ she says. ‘For a project that started off about needing the room for an extra bed, the result is so very much better than ever expected.’ **CKBB**

SOFT AND SERENE

Above Classic Shaker-style cabinetry features a simple cornice and Frog Leg handles in brushed steel

GO WITH THE GRAIN

Oak details provide contrast – from the island top and weathered bar stools against the blue-green painted finish of the cabinets, to the open shelves which lighten the look of the row of wall cupboards





Kitchen profile

Roundhouse Classic Painted bespoke furniture painted in Farrow & Ball Teresa's Green sets a tranquil scene in this light-filled kitchen. Teamed with a work surface of Silestone Tigris Sand and centre island topped in Wholestave oak, with reclaimed oak floor and weathered oak bar stools, the natural colours echo those of the garden, the views of which are enjoyed through the frameless picture windows.

ROUNDHOUSE

11 Wigmore Street, London,
W1U 1PE. Tel 020 7297 6220.

roundhousedesign.com

Roundhouse bespoke kitchen
prices start from £35,000.

Architecture by Cousins & Cousins,
Linton House, 39-51 Highgate Road,
London, NW5 1RT.

Tel 020 7482 4009.

cousinsandcousins.com



PERFECT BLEND

A worktop of Silestone Tigris Sand quartz surface for the sink area is non-porous and hardwearing. Its shade was chosen to blend in with the colours of the room

BRIGHT IDEAS

Modest Toldbod white glass pendant lights by Louis Poulsen are each hung on a teal coloured fabric cable

FRAMELESS BEAUTY

The L-shaped window creates a focal point for the house and blurs the boundaries between interior and exterior





DELIGHTFUL DINING

The island marks the boundary between the old galley kitchen, left, and dining room on the right. Now the family can sit, socialise and enjoy the garden views

‘We reused many elements from the original framework of the home such as window frames and bricks, and also repurposed the existing kitchen cabinetry’



JELENA COUSINS
DIRECTOR,
COUSINS & COUSINS
ARCHITECTS

Q&A

How did you begin the project?

In order to create the new bedroom on the first floor, it made sense to extend out at the back of the house. This then created an opportunity to introduce much more light into the ground floor and open up the space to make it better suited to modern busy family life. We agreed with Rachel and Patrick to knock down the wall between the existing small, galley kitchen and separate dining room, combining and extending the rooms to create a

single, larger, open-plan space which let in the maximum light.

Can you tell us about the large window?

We wanted to create a room that was as bright as possible. A column is slightly set back from the corner to take the load from the floor above, assisted by a system of concealed beams. This allowed us to design a large window to wrap around the two sides, for a frameless look. A sliding door on one side, offers access to the garden.

And how did you choose the materials?

We reused many elements from the original framework of the home, such as the window frames and bricks throughout the structure. We also repurposed the original kitchen cabinetry. We used the same reclaimed oak flooring throughout and chose a timber to match other areas of the ground floor: it is reclaimed pine, which has been whitewashed and oiled for a natural, semi-matt finish.



SEAMLESS STYLE

A sliding door
affords easy access
to the garden from
the new glazed
dining area



Stockists

APPLIANCES

Similar **oven**, B14P42N3GB, £613; Similar **gas hob**, T62S26S1, £300; S51E50X1GB fully integrated **dishwasher**, £398, all Neff. Cube 90 **extractor**, £529, Elica. Similar freestanding **fridge-freezer**, KG34NV130G, £657, Siemens.

FIXTURES AND FURNISHINGS

Eiger tap, £209; Kubus KBX 110-55 undermounted stainless steel **sink**, £371; both Franke. Wholestave oak island **worktop**; Silestone Tigris Sand **worktop and upstand**; White glass **splashback**, all priced to order, Roundhouse. Whitewashed and oiled pine reclaimed **floor**, priced to order, Reclaimed Flooring Company. Weathered oak **stools**, £145 each, Cox & Cox. Toldbod glass **pendant lamps**, £210 each; PH4/3 pendant lamp (above dining table), £350, all Skandium. Many lighting suppliers sell decorative cable and braid for hanging pendant lights, or try Lamps and Lights for a good selection of colours. Eames DSR **chairs**, £223 each, The Conran Shop. Try After Noah for a similar vintage oak refectory **table**.

FOR STOCKISTS, SEE PAGE 154



SFP140

Award winning 60cm multifunction oven • Touch screen control with colour display • 50 preset programmes • 10 customisable recipes • Pyrolitic self-cleaning Function • Quadruple glazed Doors • 13 amp power supply

SMEG UK LTD.

3A Park Square, Milton Park,
Abingdon, Oxon, OX14 4RN

Info Line 0844 5578975

www.smeguk.com

customerservice@smeguk.com

Available from:





SMOOTH MOVES

It's an easy move from breakfast at the solid oak bar to place dishes into the Fisher & Paykel DishDrawer alongside

ANOTHER *level*

Natasha and Tony Prendergast have added a soaring extension to their Suffolk home, creating a stunning space for cooking and entertaining

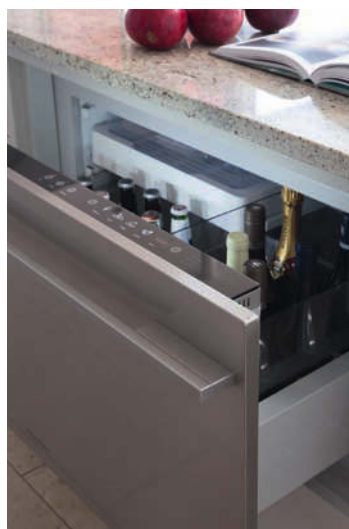
PICTURES PAUL CRAIG | WORDS AMELIA THORPE



GRAND SUSPENSION

The extractor hood, from Westin Design, is suspended on cables and built into the wall for a contemporary look. It is also very quiet and powerful, thanks to two external motors and wall ducting





TOUCH TECH

Above Touch a button, and the Fisher & Paykel CoolDrawer temperature settings can be changed from fridge to freezer, or wine cooler to pantry

GETTING FLEXIBLE

Above right Natasha chose two luxury Gaggenau ovens: each one has 13 different heating methods to provide flexibility for cooking everything from pizza to bread and cakes

He may be a pharmacist by training, but Tony Prendergast admits to a secret passion: building. 'I love it,' he laughs. 'I've done a couple of property development projects, including building our own home, but I've never got it quite right.' So he persuaded his wife, Natasha, that they, together with six year old daughter Eva, should move again to give his love of building another go. 'In my mind, I had developed an idea of a room with a huge glass

wall and a gallery, and we started looking for a suitable plot to develop,' he recalls.

Eventually, they spotted the ideal property – a Victorian house in a half acre plot, not far from Lowestoft on the Suffolk coast, close to the beach and conveniently located for Eva's school. At its rear, the house had a rather dilapidated extension, built in the 1950s. 'We knew we could knock that down and replace it with a larger extension to create our dream room,' explains Tony. 'Both Tash and I love the old look of the front and the idea of contrasting it with a very modern space behind.'

After spotting a kitchen produced by Bryan Turner Kitchen Furniture in this magazine, the couple went to meet designer Jonathan Turner. Together, they began to develop plans for a clean-lined, modern kitchen, its proportions designed to suit the scale of the super-size new room and its soaring glass wall and apex roof.

And while Tony loves building, Natasha loves cooking, so she also had strong views about the design. 'I'm mad about cooking,' says Natasha (who chose the Gaggenau ovens after enjoying using them on a course at The Raymond Blanc Cookery School). 'We wanted the kitchen to work perfectly from a practical point of view, with lots of work surface and built-in appliances, but also to feel relaxed and spacious when friends and family are here. Jonathan was brilliant at combining these elements – and I love the way he has created the cool, calm look with such a workable layout.'

And is Tony's buzz from building now satisfied? 'This house gives us a great feeling, so we haven't got any plans to move again,' he says, with Natasha nodding fiercely in agreement. Then he says after a pause, 'But, never say never.' **EKBB**



**LIGHT
FANTASTIC**

The new, south-facing room is flooded with plenty of light which comes from the double-height glass windows

Kitchen profile

Bespoke Modern Shallow Shaker cabinetry, traditionally made and hand-painted in Mylands Chambers Gate 85, creates a modern mood in this dramatic and light-filled space. River White granite worktops and steel appliances echo the cool tones of the room, while solid oak frames the tall cabinetry and makes a welcoming breakfast bar, adding a note of warmth to the design.

BRYAN TURNER KITCHEN FURNITURE

Fitzmaurice Court, Station Road,
Wymondham, Norfolk, NR18 0NN.
Tel 01953 601567. bryanturnerkitchens.com
Kitchen prices from £20,000.



HIDDEN DEPTH

A larder cupboard is lined with oak shelves, and a 'secret door' opens to reveal the utility room



JONATHAN TURNER
DESIGNER, BRYAN
TURNER KITCHEN
FURNITURE

How did you begin the project? I like to begin by sketching in perspective, which is how you see things as you walk into a room. It also helps me visualise where the focal points should be - in this case the bespoke extractor hood draws the eye, together with the large island in the foreground. As you move further into the room, the huge glass windows make such a strong feature, I felt it was important to provide a counterbalance by building a series of tall cabinets opposite, wrapping them in a frame of solid oak.

Can you tell us about the 'secret door' between the kitchen and utility area?

I thought it would be fun to hide the door in the style of a Queen Anne secret room. So we built a door in the tall

cabinets, indistinguishable from the doors on either side. You really can't tell that it's an entrance to another room. It was tricky to engineer - especially the plinth which had to match perfectly with the rest of the run, but so worth it for the end result.

And the colours and materials? The soft grey of the simple, flat-fronted cabinetry creates quite a neutral backdrop, while the River White granite introduces different texture, as does the oak used for the frame around the tall cabinets and the breakfast bar. The steel handles and extractor are all part of the gradient of materials that are interesting to the eye, yet also soft and calm, and reflective of the natural tones of the garden beyond.



Q&A

‘The soft grey of the simple, flat-fronted cabinetry creates a neutral backdrop’

BREAKFAST CLUB

The use of oak for the breakfast bar helps to add a new dimension to the space



*'We loved the idea of contrasting the old look of
the front with the very modern space behind'*



**STATEMENT
STYLE**

Solid oak frames the tall cabinets, creating a signature finish and complementing the wood of the breakfast bar and dining chairs





Stockists

APPLIANCES

B0450-110 single **oven**, £2,050; B0451 single **oven**, £2,050; BM450-110 **combination microwave**, £2,158; WS462-110 **warming drawer**, £658; BS451-110 combi **steam oven**, £2,155; CI491-113 **induction hob**, £1,294, all Gaggenau. DD90SDFHTX2 **DishDrawer** Wide, £1,499; RB90S64MKIW **CoolDrawer**, £2,299 with 840545 stainless steel **door skin**, £385, all Fisher & Paykel. IK3510 integrated larder **fridge**, £938; SIGN3566 integrated **freezer**, £1,280, both Liebherr. Bespoke wall-mounted **hood** and external motors, priced on order, Westin Design.

FIXTURES AND FURNISHINGS

Orbiq 4214PF **tap** with U spout in pewter finish, £290; Orbiq 4314PF **mixer tap** with U spout and separate spray rinse in pewter finish, £410, both Perrin & Rowe. Modern **boiling water tap** in stainless steel effect finish, £980, Quooker. Icerock 3339W round bowl undermounted **sink** in stainless steel, £234; Poise 3389W-NA 1.5 bowl undermounted stainless steel **sink**, £785, both Kohler. River White granite **worktops**, glass **splashback**, all priced to order, Bryan Turner Kitchen Furniture. **Lighting and sound system**, priced to order, Audio Images. Brushed Moleanos limestone **floor tiles**, from £65 per sq. m, Melford Stone. Similar **dining table and chairs**, available from a selection, John Lewis.

FOR STOCKISTS, SEE PAGE 154

LOFTY HEIGHTS

The gallery underneath the high, vaulted ceiling looks out over the new room

SOLA*KITCHENS



NEW
DANISH DESIGN
EXCLUSIVELY
BY SOLA KITCHENS

OFFER: FREE Beoplay A9 from
Bang & Olufsen worth £1,699 when
you commission a Danish kitchen
before 30 April 2015.

121 Munster Road
London SW6 6DH
020 3004 0898
www.solakitchens.com

BESPOKE SCANDINAVIAN INTERIORS

INTERIOR DESIGNER Kitchen

In a streamlined new-build, Luke Beveridge of DesignSpaceLondon combines clean lines, hidden aspects and interesting materials

PICTURES ANTHONY PARKINSON | WORDS VICTORIA ROLISON

On first glance this kitchen is a simple, sleek affair with pops of colour here and there. But look again (or start opening cupboards), and you'll find everything a busy family with two teenagers could need fitted within its glossy Modulnova cabinets.

Working with a new-build house nestled in woodland, Luke Beveridge of DesignSpaceLondon, tells how he was tasked with a dual-design brief of creating a practical kitchen which would be streamlined enough for an open-plan layout.

'The house itself is subterranean with the children's bedrooms all on the basement level and the kitchen, diner and living area making up one massive open space on the ground floor,' he explains. 'It was

important to the client for the whole family to have a space they could share, with someone prepping or cooking while other friends or family were perched at the breakfast bar or around the table. It was also necessary to be able to conceal any messy areas.'

This meant a sink, stainless steel worktop and shelving space all tucked behind pocket doors which the family could close and hideaway before leaving the house or opening the door to guests. 'Almost like sweeping things under the bed,' he adds.

The bonus in this design is the time devoted to personality-filled details, like the bright splashback and bar stools which reveal the owners' sense of style, and the thick walnut breakfast bar which nods to the woodland right outside. Bright and beautiful. **ekbb**



Luke Beveridge

SENIOR DESIGNER,
DESIGNSPACE
LONDON

Luke specialises in Italian kitchen design from the company's new Wigmore Street showroom, where forward-thinking Italian designs by Modulnova are exclusively showcased. He prides himself on being involved with his projects from the initial consultation and design process right through to the final completion.



PROJECT DETAILS

CABINETRY Tall cabinets, Fly and SP29 kitchen collections in Corda satin lacquer; Island cabinets, Twenty Collection in Tornabuoni Kerlite porcelain, all Modulnova **BREAKFAST BAR** Wenge wood with oiled finish **ISLAND WORKTOP** Tornabuoni Kerlite porcelain **SINK** Nero Assoluto granite, all by DesignSpaceLondon. Kitchens start from £25,000 **OVENS** Two Generation 6000 PureLine H6660 BP ovens, £2,399; Generation 6000 PureLine H6600 BM microwave combination, £2,349; **WARMING DRAWER** Generation 6000 PureLine ESW6229 SousChef, £1,049; **INDUCTION HOB** KM6357, £1,800, all Miele **FRIDGE** Built-in larder fridge, RC289202, £2,420; **FREEZER** Built-in RF287202 Vario Cool 200 series, £1,760, Gaggenau **FRIDGE** UIK1550, £1,005, Liebherr **DISHWASHER** G4960 Vi, £975, Miele **WASTE DISPOSAL UNIT** Evolution 200, £399, InSinkErator **TAPS** 13193 Telescopic tap, £432 and 00909 Oxygen tap, £468, Gessi **BOILING TAP** Quooker Basic boiling water tap, £940, Quooker **BREAKFAST BAR STOOLS** Calligaris Jam barstool, £191 each, London Designer Furniture Ltd **DINING TABLE** Try similar Hilton extending dining table, £890, Go Modern **CLOCK** Try similar Brixton wall clock, £85, Newgate Clocks **DINING BENCH** Try similar Cherry corner bench, £3,500, Wharfside **DINING CHAIRS** Hans J. Wegner Wishbone chair in oak with natural cord seat, £588, The Conran Shop



EASY LIVING

As well as a fridge and freezer, a separate pull-out fridge next to the sink on the island can be used for prep, with ingredients and drinks all to hand

CLEVERLY CONCEALED

With the aim of creating a clean and clear living space, practicalities like an extractor and air conditioning unit have been contained in a purpose-built box on the ceiling. Powder-coated white with LED spotlights, it blends in perfectly and is practically hidden from the eye



'The island is made from porcelain which is a bulletproof material and perfect for a working kitchen with children'



HIDDEN SECRET

Pocket doors reveal a bright and bold breakfast cupboard with an orange glass splashback, stainless steel worktop, shelves and sink

FLAWLESS DESIGN

Three different Modulnova kitchen systems were used, with aspects of each of the Twenty, Fly and SP29 ranges, providing the perfect jigsaw puzzle

SEAMLESS STYLE

Below The flooring is made up of concrete-style porcelain, with the island designed to look like a continuation. The clean lines of the walnut breakfast bar and granite sink offer stark contrast as well as an extra design dimension

Q&A

How did you create the kitchen layout?

The entrance to the kitchen is through the boot room door in the top right corner, so the family can bring in the food shopping and load it straight into the fridge and freezer to the left or the larder on the right-hand side. The ovens are in a clean linear design with

a triangle between them, the sink and the hob. Then there's another tall larder close to the dining area for plates and crockery and all other kitchenalia.

Tell us your favourite parts of the design? The kitchen is contemporary with cheeky little details thrown in; the orange splashback behind the pocket doors is akin to opening up a suit jacket with a nice lining. Other dynamic elements, like the stone sink and

timber breakfast bar, offer statement shapes which lift the design from being simple and give more interest.

How did you choose the materials?



The island is made from porcelain which is a bulletproof material perfect for a working kitchen with children, while the walnut breakfast bar is much more tactile to sit at and will grow with the family, creating its own character even if it gets scratched or knocked.





 caple

design.living

Tel: 0117 938 1900 www.caple.co.uk  

Innovation, cutting edge design and practicality, along with efficiency and ease of use are all combined to produce new and exciting, award winning products for your kitchen. At Caple we strive to deliver all of these attributes with all of our products.

Image: WC177 triple zone in-column wine cabinet, RiL179 in-column larder fridge and RiF178 in-column freezer with SSDOOR stainless steel furniture doors.

Style

UNDERCOVER STYLING

Adorn your table with delicate floral sprigs and encase with clear glass cloches to recreate a quirky garden theme

Glass domes, £47.50 each, Rose & Grey

INDUSTRIAL FLAIR • KITCHEN SEATING • PATTERNED PLATES

espresso
live cook sleep



Cesar

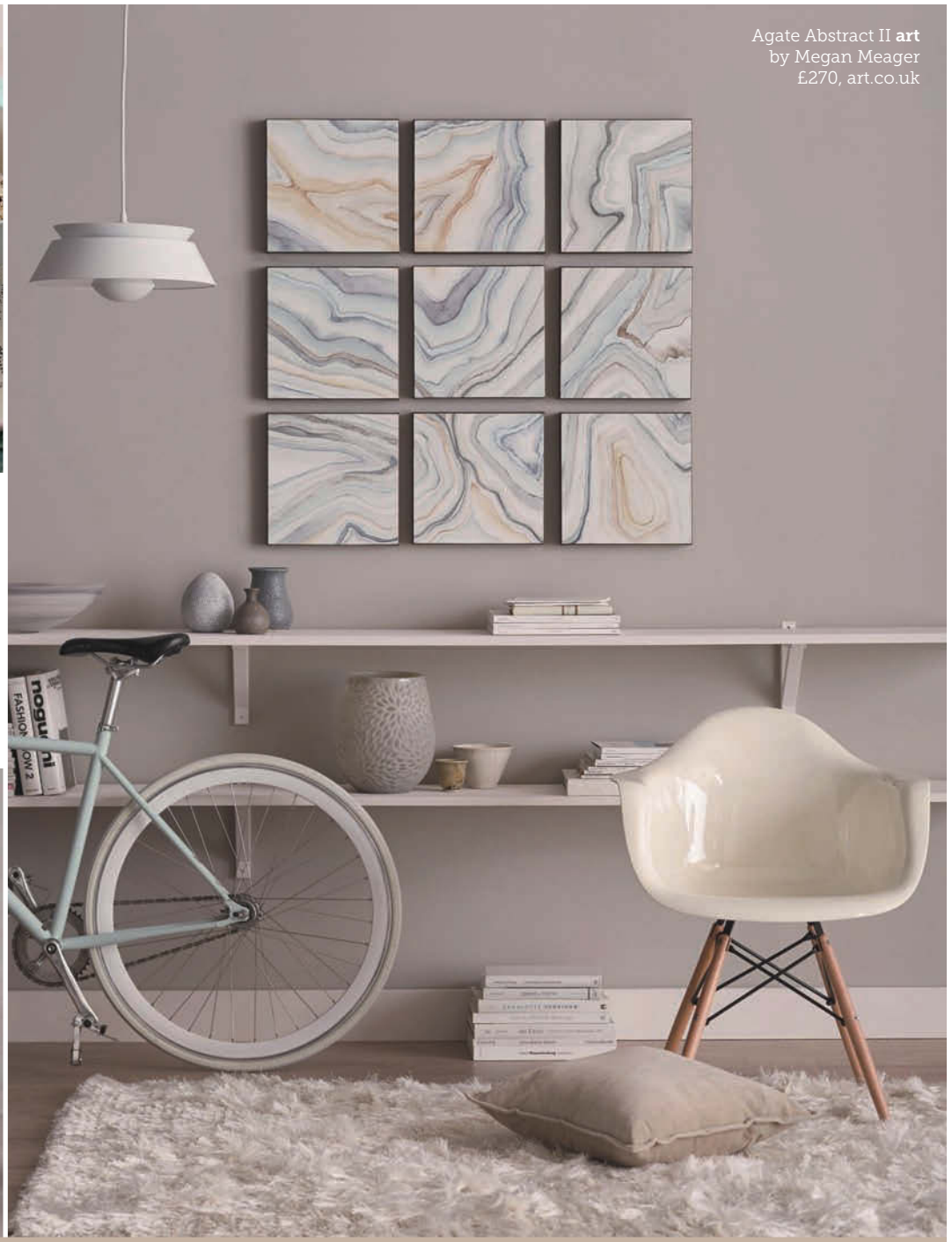


Adelynn animal ceramics
from £6.50, Bloomingville

*‘Enhance your living
space with statement
wall art, wood and
stoneware pieces and
geometric patterns’*



Hand-poured cement
candle holders from
£6, Anthropologie



Agate Abstract II art
by Megan Meager
£270, art.co.uk



S.b. 01 porcelain plate by
Scholten & Baijings £35, SMUG



Cracked Ice cushion
by Angela Johnston
£65, Flock



Burton tan leather
trunk £250, India Jane



Wood lamp by
TAF Architects
£129, Muuto

Crackle planter pot £15,
French Connection

FOR STOCKISTS, SEE PAGE 154



Make a Statement. Surfaces for your home.

Comprised of 93% natural quartz - one of nature's strongest minerals, Caesarstone quartz surfaces offer the ultimate combination of form and function, allowing for a diverse, durable, and practical surfacing material with its stain, scratch, and non-porous properties.

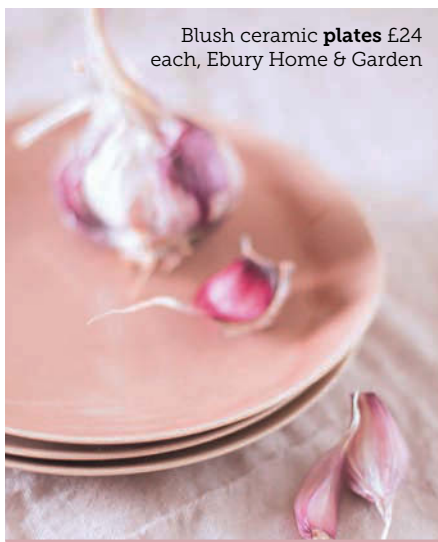
www.caesarstone.co.uk





Stoneware **mug** £10,
The White Company

*Adopt a country look
with rustic linens and
handmade ceramics
in white and dark
walnut accessories'*



Blush ceramic **plates** £24
each, Ebury Home & Garden



Hessian tableware
including **plates**
from £8; **Cup**
£5.40; **Bowls** from
£4.40; Gold **fork**
£12.70; Zola cutting
board £47; Linen
tablecloth £100;
Linen **napkin**
£7.25, all Broste
Copenhagen

**Byblos rosewood
cutlery** £352 for a
24-piece set, Arredona



Bowsley pasta bowls
£72 for a set of six, Neptune



Bertie napkins
£34, Plum & Ashby



Chicken egg cup
£7.50, Nom Living



Peanut tray £450,
Discover & Deliver

FOR STOCKISTS, SEE PAGE 154

ALBION

Handmade bathrooms directly from our factory

What makes an Albion Bath unique?

Our exclusive Iso Enamel material creates a difference you can feel....



Take a look at our hand made baths and bathroom suites. Formulated from our unique Iso-Enamel material, an Albion bath has all the qualities of cast iron but without the drawbacks, such as extreme weight and heat loss. With over 50 different models to choose from, we'll have you spoilt for choice. Remember, its not just baths that we are known for - choose from classical or modern bathroom collections including taps, showers and fine sanitaryware. Your new bathroom awaits.

Request your brochure:

Call 01255 831605

or go to: www.albionbathco.com

Etruscan Bath - 3 sizes available
Image Supplied by Little Greene



Fleur enamel jug
& mug £35, Idyll Home

*'Choose a decorative
floral wallcovering,
adding soft pastel
textures and pops of
brass to modernise'*



Wildflower wallcoverings
£49.50 per roll, Ian Mankin

Lazy Sunday collection
wallpaper from £29.95
per roll, Galerie



Revolve table lamp
£665, Bert Frank



Agar wood candle
£14, The French House



Cellini cup & saucer
£32, Villeroy & Boch

Needful cushions
£45 each, Loaf



Mesh baskets £43
for a set of two,
House Doctor

FOR STOCKISTS, SEE PAGE 154

Factory FLAIR

For an industrial-style kitchen, choose pared-back furniture and an authentic spun pendant light. Select a classic, pewter faucet to complement your wooden worktop, and add character with modern objects

COMPILED BY KIRSTEN JONES

- 1** European walnut timber **worktop**, from £260 per linear m, Second Nature
- 2** Polished aluminium industrial **reflector light** from Davey Lighting, £138, Holloways of Ludlow
- 3** B15P52N3GB Series 3 single **oven**, around £679, Neff
- 4** White ceramic pineapple **jar**, £35, Graham & Green
- 5** Bamboo napkin **holder**, £18.95, Nordic House
- 6** Classic white **radiator**, £454, Bisque
- 7** Bayenne single lever **tap** with integrated spray, from £329, Abode
- 8** Baskerville dining **table**, £1,195, Alexander & Pearl
- 9** Large storehouse **jars**, £7.50 each, Garden Trading
- 10** Canteen utility **chair**, £258, Twentytwentyone
- 11** Marine white glazed **jug**, £20, Habitat

FOR STOCKISTS, SEE PAGE 154





KITCHEN FURNITURE

This kitchen was designed by interior design firm Compass & Rose, using British Standard cupboards. Its painted cabinetry by Dulux, wooden Iroko worktop and utilitarian furniture work together to achieve industrial appeal. The cabinetry is priced from £400, while an average kitchen is priced from £7,000

**DESIGNED
FOR DINING**

Exclusive to Anthropologie, this stoneware floral dinner plate by Nathalie Lete will add colour to any table setting. It's £24 and available in a variety of different patterns



A decorative feast

Bring spring to the table with a selection of bright, patterned plates

COMPILED BY KIRSTEN JONES



1



2



3



4



5



6



7



8



9

- 1** People Will Always Need Plates coal mine platter, £80, Unique & Unity **2** Florentine indigo plate, £110, Wedgwood
3 Seletti Hybrid Ipazia dinner plate, £46, Amara **4** Royal Albert Polka Rose vintage plate, £18, Occa-Home **5** Suns dinner plate, £9.99, Zara Home **6** Oak & Acorn dinner plate by Donna Wilson, £27, SMUG **7** PiP royal pasta plate, £15, Pip Studio
8 Audun promenade salad plate, £30.95, Villeroy & Boch **9** Royal Doulton Fable Tree dessert plate, £7, John Lewis

FOR STOCKISTS, SEE PAGE 154

TAKE A *seat*

Choose practical yet comfortable seating to create the perfect kitchen for all occasions

FEATURE HAYLEY GILBERT



ISLAND LIVING

Use an L-shaped island to create casual seating. The New Classic kitchen from Martin Moore includes a breakfast bar with Eames-style designer chairs. In a hand-painted Manhattan and Blue Bird finish with Caesarstone worktops, prices start from £35,000 for a bespoke design. Find similar stools at RetroFurnish.com at £89.82 each



TALL ORDER

Chat with guests as you concentrate on the cooking with a multi-functional island complete with tall seating facing the action. Handmade Athene bar stools in Arctic Grey, £399 each; Bespoke kitchen, from £30,000, all at Humphrey Munson

W

hen it comes to planning a new kitchen we spend so much time thinking about the cabinetry, appliances and worktops that the seating can often be an afterthought. Peter Humphrey, founder and design director at Humphrey Munson Kitchens, says that it's a good idea to decide on kitchen seating at the same time as the units, particularly islands in an open-plan scheme. 'Typically, island units range from 910mm to 920mm in height,' he says, 'so if you factor in the height of the seating, you can ensure they are the perfect fit. Seating of an incorrect size around an island will render the space unusable, as the island will be either too high or too low to be comfortable.'

Islands are the hub of any kitchen, providing a central role in everything from food prep to using laptops and other wireless technology, organising paperwork, catching up with friends over coffee and keeping an eye on children doing their homework. 'The recent trend in kitchen seating has seen a move away from backless stools to those featuring a back, however high or low, to provide additional support,' adds Peter. 'These can still be tucked in underneath the island when not in use, so extra space is not required. These sturdier options also provide added back support for younger or older members of the household.'

Some of these new designs include stools covered in a woven twisted paper – an innovative take on a natural rattan finish from Lloyd Loom. The Athene stools are available in any Farrow & Ball colour, making it easy to incorporate into your chosen colour scheme. They are also easy to clean, which is always a key factor when it comes to kitchens.

'I have seen more of a demand for natural products,' confirms Julia Brown, senior designer at Mowlem & Co. 'Limed rustic oak, distressed timber and a neutral palette of stained oak are always popular.'

Jonathan Stewart, owner of Wharfside, agrees. 'I always go for wood,' he says. 'Light wood, dark wood, but always natural and always hard woods. Mix them with glass, steel, marble or Corian and quartz. Choose light woods when the room is small and tough coverings for the seats.'

If you don't have enough space for an island, there are plenty of other options to choose from, ranging from fixed window seats and a couple of stools beneath a peninsular to benches, banquette and booths. For more formal dining, opt for a large dining table and chairs and, if space allows, finish with a sofa for relaxing with the family. **EKBB**

LEATHER LOOK

Right Create a vintage feel with leather-topped bar stools from Rockett St George, priced at £120 each. Their adjustable height makes them ideal for all ages. The bespoke high gloss kitchen is designed by Barnes of Ashburton, where prices start from £25,000

BENCH STYLE

Below This oak and matt lacquer kitchen from Mowlem & Co, priced from £30,000, includes a built-in dining booth big enough for a large family. The fixed bench seat is made from tulipwood and hand-painted in Farrow & Ball's Bone with Taupe vinyl cushioning. The bespoke bench and table are made from European Oak





‘If you don’t have enough space for an island, there are plenty of other options to choose from including benches, banquettes and booths’

ANIMAL MAGIC

For something really different, how about a wenge table with wenge veneer banquette seating and cowhide upholstery with underseat drawers. As part of a bespoke kitchen from Roundhouse, prices start at £35,000



PARTY PLANNING

Left Place Neptune's Limehouse Buckland bench against a flat wall or in a corner to create a sociable dining area ideal for entertaining. Priced at £1,720, it can be teamed with the matching Limehouse kitchen collection for a co-ordinated look. The Montague Lloyd Loom chairs are £195

PRETTY IN PINK

Below This in-frame Original Artisan kitchen, from £17,500 at John Lewis of Hungerford, features an island with sink and tap on one side and small booth on the other. Add a circular table and extra chairs for family mealtimes

‘Multiple seating arrangements offer maximum flexibility, creating opportunities for everyone to be together as a family, even when doing different activities’





Benefits of BESPOKE

- If you're having a custom-made kitchen, it's best to create your seating at the same time, as your cabinetmaker can design something perfectly suited to your needs. This way it will also coordinate with the rest of the kitchen for a finished look.
- Banquettes are currently popular and are an excellent space saver, as generally you won't need as much room to accommodate them as you would a separate dining table and chairs. A bespoke design can ensure continuity between the cooking and eating areas and can be upholstered to match other furnishings. Ask your designer to include storage beneath the seats to add even more value.
- Another option is to have an island unit with raised breakfast bar, which is great for hiding cooking prep and clutter from guests seated on the other side. Consider using different levels or heights of worktop, and mix materials to add further interest and texture.
- Some bespoke manufacturers also offer to design and make matching dining tables and chairs as well as sideboards and entertainment units, which are ideal for uniting a large open-plan space.
- Your kitchen designer can advise you on everything from style, size and shape, to which surfaces and finishes are low maintenance and easy to care for. Families may prefer something that's quick and easy to clean while those who entertain a lot may look for additional comfort.
- If you are adding upholstery, cushions or seat pads, consider using the same pattern, print or colour for window dressings to create a fully coordinated scheme. Alternatively, stick to varying tones of the same colour for a more cohesive finish.



ELEGANT TOUCH

Above The Second Nature Broadoak Almond painted kitchen, from £20,000, features a multi-functional island with lower level banquet seating. You can find similar chairs from Made.com where the Flynn range is £99

ROOM WITH A VIEW

Left deVOL's handmade window seats can be created for any window, in any size and painted in the colour of your choice. An added benefit is that the seat lid lifts up, providing extra storage. Prices start from around £1,800



CHRIS MOSSOP
DESIGNER,
HARVEY JONES

What are the most popular kitchen seating options now and why?

Creating seating within an island space is proving to be very popular at the moment. It provides somewhere to eat in a hurry but is also a sociable option. Bench seating is also on trend, as it not only gives wow factor but can be cleverly designed into an island section.

What's best for each extreme – a small space and also a large kitchen?

A breakfast bar, which also has the versatility to be used as an extra work surface, is ideal for smaller kitchen spaces but also works well in larger areas. However, the current trend for bench seating tends to require

a larger surface area to be successful in making a statement, as well as being comfortable.

Is formal seating coming back into fashion or is casual the way to go?

If you have enough space in your kitchen then the current trend is to have both casual and formal seating. This means that you can have your guests nearby while you cook in the more casual setting, but it also creates an area for a more formal gathering. If you have a separate zone for seating, and perhaps are enjoying a more formal dinner, getting the lighting right within the kitchen can mean that the work area becomes a subtle feature in the background.

Q&A

‘Creating seating within an island is proving to be very popular at the moment. It provides somewhere to eat but is also a very sociable option’

SADDLE UP

Above The bespoke Saddle chair is the first piece of furniture created by Cubic Studios, a Notting Hill-based architecture and design group. Priced at £900 each, the saddle perfectly supports the body when seated

SURFACE VALUE

Right Use a peninsular as a handy breakfast bar or even a home office if space is tight. New York bar stools in white, black, taupe or coffee are priced at £521 each at Calligaris



SPACE SAVER

In a long, narrow kitchen, use a worktop overhang from the island unit to create an informal breakfast bar, then just add stools. This kitchen is from Harvey Jones, where prices start from around £18,000. Find similar white bar stools from Atlantic Shopping for £125 each





INDUSTRIAL EDGE

Above The Nox extending dining table by Team 7 is shown here in walnut but is also available in oak, beech, cherry and maple. With a palladium gloss chrome-plated steel frame, it's priced £9,780 at Wharfside. The matching bench costs £4,350

OLD SCHOOL

Below A traditional wooden table and bench set is great both for families and for casual dining with friends. It is the perfect sociable seating as there's always room for one more. Reclaimed timber dining table and benches, £5,800 from Cue & Co of London

SEATING STYLES

- Before you buy, consider the layout of the kitchen and the lifestyle of you and your family. Multiple arrangements offer maximum flexibility, creating many opportunities for everyone to be together as a family, even when doing different activities. A breakfast bar is ideal for guests to sit and chat while you get on with the cooking or for children to sit and do their homework. The ideal mix would be bar stools around an island, a separate dining table and a couple of comfy armchairs.
- To make the most of a limited space, opt for a small dining table or booth seating attached to an island unit. Bespoke designs can be tailored to suit the room dimensions. Alternatively, choose a drop-leaf dining table or a simple bistro table and chair set.
- Window seats and tables with benches are good for long, narrow kitchens. Their linear look draws the eye towards the end of a room, making it appear larger.
- Think carefully about the practicality as well as looks. It's all very well having ultra stylish seating but it's no good if it's not comfortable to sit on. Try before you buy wherever possible. If you do need some extra comfort, cushions and seat pads can soften seats up in an instant.
- Make sure the seating complements your kitchen scheme. Contemporary settings suit stainless steel, chrome and crisp white bar stools while a rustic look is ideal for wooden or black metal designs. Go for wicker, rattan or an upholstered seat in a more classic kitchen.





RUSTIC SCHEME

Made from mango wood and finished as a limed weathered oak, the Turmeric table, £801, and benches, £339 each, are an ideal sustainable option and would suit both classic and contemporary kitchen diners. Available from Sofas & Stuff

PRODUCT DESIGNER PROFILE

Katharina **EISENKOECK**

We talk to this Austrian designer-maker about her work and ideas as well as her sculptural craft in leather and concrete

FEATURE EMMA FOALE | PHOTOS EKDESIGN



The Nomadic light
(on mantelpiece) has
been given a name that
reflects its purpose – it
has a leather handle
which makes it easy to
carry around your
house. It's from £800

When did you decide you wanted to get into design? I grew up in a very creative environment as my parents are both architects. I spent my free time out in the garden with my siblings; we built tree houses and made sculptures with whatever we could get hold of. We'd often spend days laying out paper in the courtyard to create larger than life, abstract Jackson Pollock-style paintings in the hope that our father would hang them next to his prized art collection.

Where do you look for inspiration? Firstly, people and places around me but secondly I'd say problems inspire me. They encourage me to try and think of new ideas. I feel that this is part of a designer's job, to work out solutions to a constantly changing lifestyle that creates new requirements.

'I always try to achieve something that's intriguing and visually stimulating but also functional too'

Can you describe your work in a sentence? My company EKDESIGN aims to create contemporary objects with a sculptural simplicity by merging craft techniques with advanced technology.

What's interesting about using different mediums and textures? Rather than the material itself, I'm more interested in developing new techniques and also understanding its behaviour in certain environments. There are so many exciting materials out there and each one has manifold facets.

Where do you source these materials from and why? I try to source locally; most materials I use are from the UK. I recently also started to work together with specialist craftsmen in the UK, such as Leigh Cameron who makes the lightweight concrete housing for the Wander lamp and Nomadic light.

Why have you chosen to use concrete for a few of your designs and what makes it a good material to work with? Concrete is actually a rather difficult material to work with. It reacts to its surroundings such as humidity, heat or cold. Interestingly, when you produce a piece of concrete, 90 per cent of the making process doesn't involve working with the material itself. A good piece of concrete work is all in the perfection of the cast. The concrete is poured in the cast at the end and then left to dry. A really good cast means the concrete should only need some final polishing.

What do you always hope to achieve every time you set your mind to a new design? I guess I always try to achieve something unusual and intriguing; something that is visually stimulating but also functional and challenges the user to rethink the traditional idea of a piece of furniture.

Tell us about your studio workshop. My studio is in East London and only a five-minute cycle ride away from where I live. The space is a shared workshop where I work with four other designers and cabinet makers. We get a lot of energy and positivity from working alongside each other. Whenever there is a problem we try to help each other out as much as possible. I really believe that the key to a good studio environment is to never take yourself too seriously, and to always try to have fun in what you're doing.

What is your favourite part of your job? In general, I'd say I most enjoy the making part. I love being in the workshop and creating new work. Exhibiting my work at trade fairs is also always very rewarding, it is the best way of making sure you're on the right path by getting direct feedback from customers.

Can you tell us what you're currently working on and how it's progressing? I'm currently just in the beginning stages of working with stone – it's very exciting to work with. Although, to completely understand a material it can take years of working with it. I would be interested in perhaps creating my own materials in the future, but we'll see when I will find time for something like that.

Can you tell us something about you or your work that we'd be surprised to know? Customers often wonder where I get my work produced and they're usually quite surprised when I tell them that I still make most of my leather work at home in my own kitchen. The process of boiling leather is very smelly... I wait until everybody has left the house then I go down into the kitchen and start 'cooking' some leatherwork.

What do you have planned for the rest of 2015? I'm working on a few secret pieces that I'm planning to launch during Milan Design Week in April. Keep a look out for any hot-off-the-press news which will be announced on my website first.
EKBB katharinaeisenkoeck.com

TOP The Wander lamps, £800 each, can be used indoors as well as in the garden. They are made using leather and concrete and have different options so you can adjust the light condition as you need, from soft and ambient to more intense task lighting for reading

MIDDLE A mirror is the main feature of the Sunrise table, £2,720, and what makes it intriguing is that you can roll the mirror from side-to-side or pull it out to hang it on the wall. This interaction adds subtle interest to the minimalist design

BELOW The lightweight Concrete bowls are durable and have a smooth surface texture which is made through a specific polishing technique. A single bowl is £72 or you can choose a set of two for £140

BOTTOM The handmade Stacking candles with leather handles are an example of how Katharina always thinks about how we use and work with everyday objects. Prices from £48



Katharina Eisenkoeck

Katharina began her career at the Art and Design School Ortwein in Graz, Austria. She studied architecture at the Technical University in Vienna and a year later completed her Bachelor at Central Saint Martins College in BA Arts Design and Environment in London. In 2011 she set up her studio while finishing her Masters degree at Camberwell College of Arts, graduating in 2012.

NEW!

JUST SENSATIONAL!

SENSA. The Exclusive Granite Kitchen Worktop that doesn't stain.
10 Years Warranty.



SENSA PROTECTION

NEW
IMPROVED
PRICES!

WITH SENSa PROTECTION



WITHOUT SENSa PROTECTION



Please see website for full terms and conditions

COSENTINO UK:

Unit 10 Bartley Point, Osborn Way, Hook, Hampshire, RG27 9GX. / info.uk@cosentinogroup.net / www.cosentinogroup.net / www.sensabycosentino.com



Technology

IN THE ZONE
*Cook in style
with this sleek and
original multi-zone
induction hob*

The C950i hob from Caple is a unique four-zone model complete with 11 power levels and can be inset or flush-mounted to create the ultimate cooking platform.

Priced at £1,845

TECH NEWS • TOP CHEF JAMES MARTIN • KITCHEN INNOVATIONS

TECHNOLOGY NEWS

TAKE CONTROL OF YOUR HOME WITH THE LATEST INNOVATIONS

COMPILED BY LUCY MACDONALD

Small but POWERFUL

Take the chore out of doing the vacuuming with the Samsung POWERbot VR9000. This robot vacuum has a Digital Inverter Motor which makes the suction up to 60 times more powerful than other similar models on the market, as well as a Visionary Mapping™ Plus System, which creates a complete map of the home to calculate the most efficient cleaning path. Priced around £700 from John Lewis. samsung.com/uk.



ON THE SHELF

New from CDA is the unique 3B10BL glass shelf extractor design. Perfectly suited to a more contemporary kitchen scheme, this model features four different speed settings, an extraction rate of 586m³/h, noise level rating of 65dB and is ideal for ducted and recirculating installation. Priced at around £595. cda.eu.



Rising heat

Frontline Bathrooms has added to its 2015 collection with the Warmup 4iE thermostat. It's able to adjust its settings based on the temperature outside, give you travel and weather updates and even provide energy saving advice which can help reduce your bills. As it can be controlled using a smartphone or tablet you also have the freedom to adjust it wherever you are. The Warmup 4iE WIFI Controller in Onyx Black is £195. frontlinebathrooms.co.uk.



ALL-IN-ONE COOKING

Keep control over your cooking with the new multi-functional AKZM 8790/IX induction oven from Whirlpool. The 6th Sense® technology monitors and adapts the process as needed, resulting in more efficient baking, roasting and grilling functions. It also uses induction technology (which is based on magnetic field generation through a shelf in the oven) but can also be a conventional oven if needs be. It has a 73-litre capacity and is priced at £999. whirlpool.co.uk.



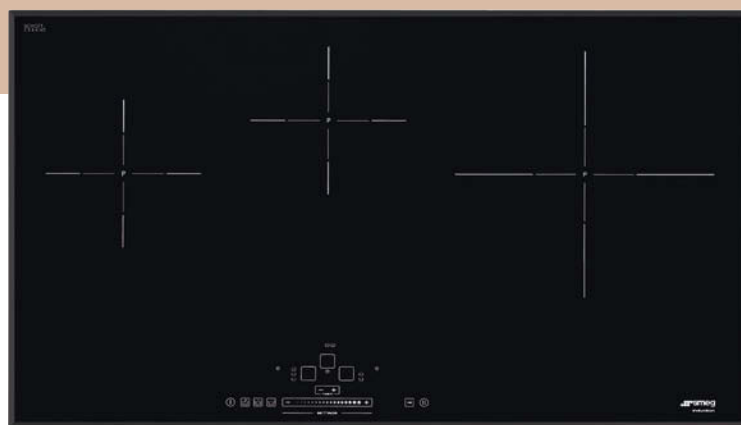
Caffeine Fix

Nespresso and KitchenAid have joined forces to create a brand-new espresso machine. With a powerful 19-bar pressure pump it ensures that the maximum amount of flavour is extracted from the coffee, and the 1.4-litre water tank is easy to fill and keep clean. Available from John Lewis and priced at £309 for the non-milk version and £349 for the milk version with Aeroccino. kitchenaid.co.uk.



Smart sounds

Be blown away by the BeoSound Moment intelligent wireless music system from Bang & Olufsen. The smart PatternPlay feature adapts to your listening patterns and suggests music or radio shows that fit with the relevant day of the week and the time of day. The MoodWheel function also finds the perfect song to match your mood – a single touch on the multi-coloured MoodWheel activates a playlist defined by your finger's position on the wheel. Connect to some speakers and you're away. Priced at £1,795. bang-olufsen.com.



IN THE ZONE

Smeg has unveiled its latest induction hob – the SIH5935B Slider Touch Control. This 90cm hob has three full power induction zones, which handy all have their own individual timers. Other useful functions include auto boiling, simmering, and a melting/low temperature cooking feature which is ideal for melting chocolate or butter, as well as just keeping food warm. There are nine power levels with quick settings and three independent boosters that allow each zone to work at full power when intense heat is required. Priced at £869. smeguk.com

BAKE AWAY

Rangemaster has released its new cooker, the Nexus Induction, which is available in both 90cm and 110cm versions. The 90cm (*pictured*) has five burners and a whole host of conventional oven functions. The 110cm model also features a proving drawer, ideal for the budding baker. It comes in a choice of black, stainless steel, white (*shown*) and slate colours. It's from £2,474. rangemaster.co.uk.



MY FAVOURITE KITCHEN APPLIANCE

James MARTIN

Well-known TV chef James Martin chats about his latest cookery book, go-to comfort food and his favourite recipe-testing kitchen appliance

FEATURE LUCY MACDONALD

You've got a new cookery book out called 'Home Comforts' – what's the inspiration behind it? The book comes off the back of the TV show, and the first series went extremely well, so because of that we then did a second series, which we filmed in the summer of last year. The book was shot in my house, in the same place as the TV show, so it all connects together. The important thing was that the book was accessible for everybody, it's not something where I'm putting in guava berries from some random place on the internet! It's all stuff that I like to cook at home and it is hopefully full of recipes that people would like to cook at home themselves, which I think is why the TV series proved to be such a success in the first place.

Out of all the recipes in your book, what would you recommend for a dinner party? There's a quick smoked salmon recipe which is really nice with cucumber, also ribs in BBQ sauce, pavlovas... There's lots of different recipes for all dinner party occasions including summer and family celebrations – you can pick and choose.

What's your favourite comfort food when you're cooking for yourself at home? I use chicken quite a lot – stews, pot roasted chicken and that sort of thing, you just can't beat it in my opinion.

What ingredient have you been using the most recently? I would say more than anything it has been game as we used so much of it at the restaurant during the winter season, like pheasant, partridge, grouse and lamb. I know that people think lamb is for in the spring, but it's

at its cheapest during the winter, as the lamb farmers have been really struggling to sell it. I've been cooking with lamb a lot.

What is your favourite appliance to use in the kitchen? I have got the Pacojet appliance, which is the one that I use more than anything. We already had one at the restaurant so I've now bought one for myself at home so I can use it to practice recipes for the restaurant. It makes amazing pâtés, as well as ice creams. You do need to know what you're doing, but once you have it the Pacojet makes the best ice cream that money can buy.

You've released cookery books, had your own TV shows, owned a restaurant – what has been the most rewarding project you have worked on in your career so far? Honestly it would be a BBC1 programme that was on in December last year called 'Meet The Street'. It was a totally different thing for me as it was nothing to do with food – it brings up issues such as loneliness, isolation and suicide. I think it is the best thing that I have ever done. Documentary programmes should be inspiring and make people think – I would say that making this show changed the way I am as a person.

Have you got any exciting projects or news coming up this year? I've got a new venture in March on a big cruise ship called Britannia, and I also have a new restaurant opening up at Stansted airport, which will be a massive fast food takeaway outlet. Last year was a busy one for me and I worked basically seven days a week, so for 2015 my aim is to try and have a day off every now and then! **EKBB**

CLASSIC COOKING

Create a dessert packed with flavour with this passion fruit crème with coconut and cherry biscotti (*below left*). Images from 'Home Comforts' by James Martin, Quadrille, £20. Photographer: Yuki Sugiura

MEAT-FREE MEALS

Try something a bit different with this salt crust dough-baked celeriac with crème fraîche and chive dressing (*bottom right*)

MIX IT UP

The Pacojet food processor allows you to 'micropurée' fresh, frozen food into amazing mousses, ice creams and sauces. The PJI40002 Pacojet 2 System is priced at £3,882 for the machine and accessories



James Martin

Starting his training at the Scarborough Technical College, James went on to be head chef of the then just-opened Hotel and Bistro du Vin in Winchester at just 22. Two years later he began his career in TV with appearances on both The Big Breakfast and Ready Steady Cook. He has gone on to present several of his own shows including the popular BBC show Saturday Kitchen. He has also released numerous cookery books and has opened three of his own restaurants around the UK.



'It has been the best thing I have ever done. I would say that making this show changed the way I am as a person'



AHEAD OF THE GAME

THE FUTURE OF KITCHENS IS HERE, WITH THE LATEST INNOVATIONS FEATURING SPACE-SAVING ELEMENTS, FULL AUTOMATION AND CUTTING-EDGE TECHNOLOGY

FEATURE LUCY MACDONALD



SLIDE AND HIDE

The stunning ON-OFF kitchen by Boffi allows you to keep the worktop area concealed when not in use to maintain a minimalist effect. Upward folding doors open as if by magic using the electronic controls, which also feature safety functions. This kitchen comes in black Lasermat – a nanotechnological matt soft-touch surface – but is also available in Ecolak, wood or Silcover. Prices start from around £48,000



MIX AND MATCH

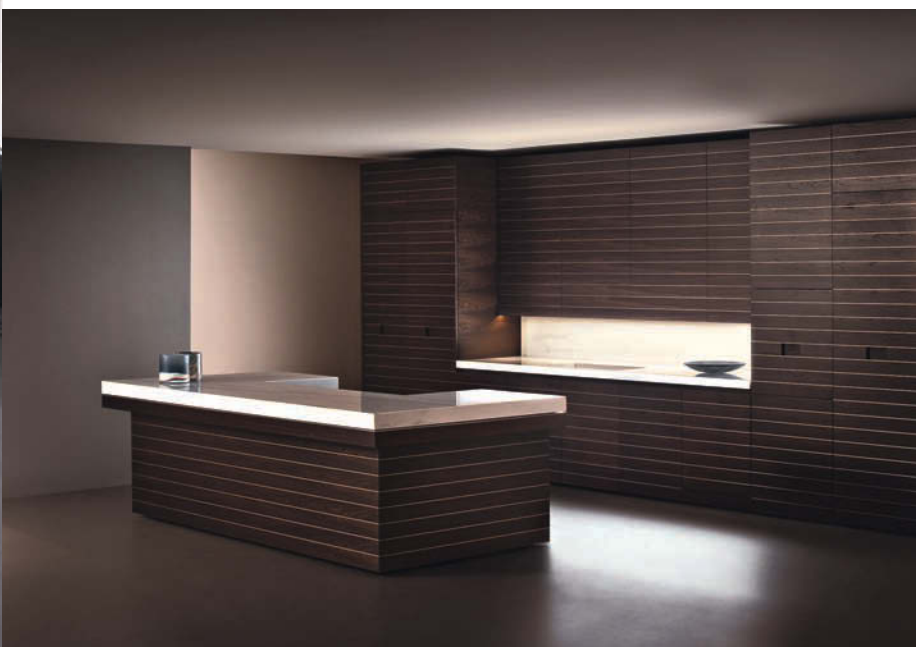
Showcasing innovative appliance design is the W. freestanding induction table from premium brand La Cornue. This flexible appliance can be used with a variety of prepping areas, dining tables, serving stations and kitchen islands, and the walnut extensions customised. The matt black hob itself features four zones, plus a bridge function that allows you to turn two zones into one larger zone, and a boost feature for quick heating. The W. induction table costs £16,260

When it comes to our homes the kitchen really is the central hub - it's the place for cooking, entertaining and spending time with friends and family. So it's no wonder that with all the current developments in technology that the future of kitchens is looking bright. Companies are pushing the boundaries with the latest ideas and innovations, and bringing forward-thinking designs to the market that are more customisable to your needs than ever before.

Take Evolution from Gamadecor. It is a compressed cube-shaped design that aims to save space when not in use but, at the simple touch of a button can slide out to a full-length fully equipped kitchen. Or there's the S1 from SieMatic which incorporates all the gadgetry you could ever want so you can control the appliances, lighting and even sound systems all from one source. With new innovations making their way onto the market all the time, the sky really is the limit when it comes to creating your dream kitchen. Read on to see the possibilities with our round-up of some of the most amazing new designs. **EKBB**

ELEGANT DESIGN

The product of a collaboration between Giorgio Armani and Dada is the sleek Slide kitchen. It's made from panelling in Sassafras wood and a marble worktop, which glides open using a horizontal sliding mechanism to reveal a thick stainless steel work area, complete with hob, sink and cutting board. The concept also includes wall units with sliding electric doors which keeps the oven out of view until needed. Price on application





KITCHEN TRANSFORMATION

The Evolution island from Gamadecor (the kitchen arm of the Porcelanosa Group) has the ability to transform into a complete kitchen. The compact cube-shaped design conceals the appliances within, and then at the touch of a button it activates two mechanisms driven by an electric motor and slides out to become a fully equipped kitchen. The white worktop is made from Knion® and the wood used is hand-crafted natural striped oak veneer. Price on application



HIDDEN TREASURE

The Wall design from Miyo Studio is a fully functional kitchen where by pushing a switch – which can be done manually or remotely – the kitchen unit (pictured background) slides out from the wall and the fronts above the worktop open up to reveal the full work area, complete with sink and appliances. Whatever the kitchen scheme, the Wall can be customised to suit your needs, as you can choose the materials and the size. Priced from around £29,000, excluding appliances

‘The Evolution kitchen is designed to occupy the least amount of space and to bring great aesthetic quality when not in use. At the push of a button it becomes a kitchen with all the features in an optimum workspace’

Javier Bastán, from Gamadecor, part of the Porcelanosa Group



ON THE MOVE

The Silent Move kitchen by Neil Lerner is a hi-tech island unit. It can be used as a standalone island and workspace, but with a slight push of the hand the work surface converts into a more complete kitchen, revealing a sink, tap and induction hob underneath. The 12cm thick worktop is clad in composite stone and comes in a choice of 10 different colours. Priced from around £20,000



TAILOR-MADE TECHNOLOGY

SieMatic is able to provide hi-tech bespoke kitchen designs complete with integrated audio, video and internet functionality. Pictured is the S1, which features a built-in screen placed into the splashback which can be used as a TV or computer, as well as the S1 SmartBoard strip which lets you control all the electronic gadgets in the kitchen including the appliances, lighting and sound. Priced from £50,000



FLEXIBLE LIVING

The AdaptLiving concept is the result of a collaboration between the Poliform Group and the SkillPoint Health Care Design Centre at Politecnico di Milano University. Created using HI-MACS® Alpine White material, it's designed with wheelchair users in mind, and is a height-adjustable, multi-functional island divided into two work areas for increased flexibility. Operated using the APPCore™ system, developed by Tazzari Design, it's activated using a double touch slider and controls the flow and temperature of the water in the sink, while six LEDs in different colours tell you variations in temperature. Price on application





SLEEK & SOPHISTICATED

Made from ultra-light and heat resistant carbon fibre, the INVISIBLE design from Toncelli is a super modern kitchen packed with the latest technology. It doesn't feature any handles or grooves but opens up on a motorised system at the touch of a button. Not only that, this model incorporates a touch screen with internet connection which allows you to control all the automated components, as well as an audio system that uses Glauk technology which transmits sound on the surface of the kitchen, amplifying it around the space. Prices available on request

west one bathrooms ltd.
Destined to create the world's most beautiful bathrooms



Battersea | Chelsea | Clerkenwell | Knightsbridge | Mayfair | Notting Hill | Wandsworth | Kent | Surrey

+44 (0) 333 011 3333

At Home Design Service available

westonebathrooms.com

Bathrooms

A photograph of a classic bathroom interior. The room features a white clawfoot bathtub with a chrome faucet and showerhead. On the wall above the tub is a small framed portrait of a woman. To the right is a white vanity with a mirror and some toiletries. In the foreground, there is a dark patterned armchair with a light-colored throw blanket. The walls are a warm, textured beige, and the floor is made of large, dark wood-look tiles.

CLASSIC TOUCH

Complete a warm and neutral period scheme with a traditional, white freestanding bath

Hampshire Classic Edwardian single ended roll top bath, from £1,560, Victoria + Albert Baths

TOP 10 TRENDS • ROSEWOOD HOTEL • ESSENTIAL ACCESSORIES

Bathroom News

The latest launches and our favourite bathing beauties

WRITTEN BY KIRSTEN JONES



Two's COMPANY

Avoid the morning rush for the bathroom and enjoy a 'his and hers' experience with the Dalby showers in a nickel finish. Here they are twinned in a tiled limestone enclosure and priced from £2,394 each, the showers are a complement to the cast iron, hand-painted Spey bath, from £3,570, and mixer, from £1,434. drummonds-uk.com.

LOOK EAST

Mandarin Stone has introduced a shapely addition to their decorative tile range. Casablanca is based on traditional encaustic designs in square and hexagon forms. 12 designs pair with base shade tiles and are available in monochrome and terracotta colourways. Patterned tiles cost from £40.80 per sq. m. mandarinstone.com.



CHIC REFLECTION

Store your accessories in style and keep your appearance in check with the Memoria mirror range from Vitra. Designed by Christophe Pillet, the mirrors boast a sleek exterior. There are two models with different mirrors and a choice of external trim in chestnut, metallic grey or metallic mocha. The Memoria illuminated mirror cabinet with sliding door is priced from £1,434. vitra.co.uk.



FRESHEN UP

Vipp's new bathroom range provides all the essentials for you to wash, clean and dry. Items include the Vipp441 sectioned laundry basket with perforated lid, £359; Vipp9 soap dispenser, £85; Vipp109 organic towels, £85 for a box of four; and the Vipp982 bathroom module with integrated sink, Vipp tap and three drawers, from £3,195. vipp.com.

SET IN STONE

If you're looking for a contemporary basin with statement features, look no further than the Modern basin from Lapidica. The stone specialist has achieved a refined and distinctly architectural design, hand-carved in limestone with a matt, honed finish. It's available in two natural colours, grey and white, and bespoke designs can be made in other stone and semi-precious materials. The Modern basin costs £594. lapidica.com.



APRIL SHOWER

Add a traditional element to the bathroom with the new Henley showering range from Roper Rhodes.

Boasting a number of practical features, the two models, exposed and concealed, operate on a minimum pressure of 0.5bar and have additional single function brass handsets. The SVSET52 Henley dual-function concealed diverter shower system pictured is priced from around £500, while the SVSET50 exposed model starts at around £550. roperrhodes.co.uk.



Crystal CLEAR

Decorate your basin with the award-winning Axor Starck V mixer tap from premium bathroom brand Hansgrohe. Formed from organic crystal glass, it features an open, rotatable and detachable spout and a water-saving flow rate of four litres per minute. Prices from £1,080. hansgrohe.co.uk.



Elegant combination

C.P. Hart has introduced a new and exciting addition to its contemporary bathroom collection, providing a touch of elegance to minimal, clean-lined design. Available in an oak or white finish, Artelinea's I Borgia innovative furniture combines old-world craftsmanship with modern taste to achieve a fresh take on classic styles. The Artelinea I Borgia furniture collection is priced from £3,861. cphart.co.uk.



INTERIOR DESIGNER Bathroom

Internationally renowned designer Tony Chi creates opulence and luxury in this lavish private suite at London's Rosewood hotel

PICTURES GARETH GARDNER | WORDS AMELIA THORPE

As the traffic zooms by in busy Holborn, grand gates swing open to a little piece of calm: the Rosewood London hotel. Built as the headquarters of the Pearl Assurance Company, the Grade II building dates back to 1914, and still features a magnificent Pavonazzo marble staircase which rises up through all seven storeys of the hotel beneath its 166ft cupola.

The entire building has been recently refurbished by internationally renowned designer Tony Chi and Associates to become this luxurious hotel. It is the only hotel wing in the world to have its own postcode and and nestled here is the Manor House suite, a private sanctuary including sitting room, dining room, library, master bedroom and Italian marble bathroom.

'The Edwardian architecture of the building is stunning and dramatic and we wanted to mirror that throughout the interiors,' explains Tony. The drama of this bathroom is first evident from the master bedroom, which reveals a glimpse of the grand Calacatta Oro marble bath, taking centre stage.

Marble steps lead into a black lacquer and mirror-clad entrance and to the sanctuary beyond. 'The bathroom reflects the identity of the building,' he says. 'I like to bring a sense of design that is also 'invisible' and subconscious – what you feel and sense – to deepen your experience of the space,' he says.

It's true: within the quiet of these gently lit, marble-clad walls, the mood is luxuriously peaceful and the roar of London traffic a million miles away. **EKBB**



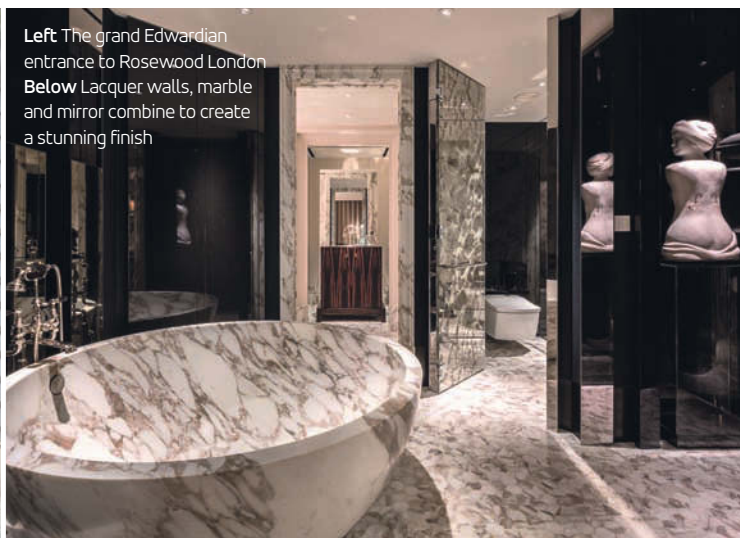
Tony Chi

TONY CHI & ASSOCIATES

Head of his New York-based interior design practice, Tony Chi has an internationally outstanding reputation for the elegance and sophistication of his hotel and restaurant interiors around the globe. tonychi.com



Left The grand Edwardian entrance to Rosewood London
Below Lacquer walls, marble and mirror combine to create a stunning finish



PROJECT DETAILS

MARBLE BATH Similar bespoke Calacatta Oro from £28,104, Calacatta **MARBLE WALL AND FLOOR CLADDING** from £564 per sq. m **VANITY CHESTS** Similar bespoke marble-clad from Simon Orrell Designs **DRAWERS** in shagreen, priced to order, De Ferranti **BASINS** Normandy Octagonal in hammered copper with polished nickel finish, £3,710 each, Waterworks **SHOWER MIXER** BL1144 Classic black lever bath with standpipes, from £1,217; **BASIN MIXER** BL 1220 Classic black lever three-hole, from £384 each; **THERMOSTATIC VALVE** BL 8801 Archipelago and black lever flow control, from £800; **BLACK HANDSET** BK 1727 Classic **RAIL AND HOSE** from £292; **SHOWER ROSE** LB 1774 Classic 8" from £244; **PAPER HOLDER** LB4945 Edwardian dog bone from £86, all by Lefroy Brooks from Original Bathrooms **WASHLET** Neorest LE including installation frame, remote control and flush push plate, £9,142, Toto **DOOR PANELS** Verre églomisé priced to order, Lisa Stimpson **WALL PANELS** finished in black lacquer were produced by the hotel construction company. Try a local joinery company for similar **FLOOR TILES** Similar Carrara honed marble hexagon mosaic, £166 per sq. m, Mandarin Stone **WALL LIGHTS** from a selection, Chelsom

**MASTER
STROKE**

The deep, circular tub, hewn from a single block of beautiful Calacatta Oro marble, takes centre stage in the master bathroom of the luxurious Manor House suite





SWEPT AWAY

Near right A Verre églomisé door opens to the Toto Neorest washlet, with its sensor-based lid that opens and closes automatically. It also has a heated seat, and well as remote controlled shower and dryer technology

TOUCH TECHNOLOGY

Middle The remote control panel for the Toto Neorest washlet offers the ultimate in private comfort

IN THE BLACK

Far right Classic fittings by Lefroy Brooks feature black porcelain detailing



LUXE APPEAL

The 185 square metre suite includes this handsome bedroom leading on to the grand master bathroom, as well as spacious sitting room, dining room and library, all designed by Tony Chi



FINE FINISHES

The dressing chambers each feature a marble-clad vanity chest with drawers finished in shagreen leather with nickel detailing



'It is fun, entertaining, extravagant, luxurious and comforting, all sensed as you wander from room to room'



Q&A

How did you begin the project? The challenges of Rosewood London were also its advantages. Because of the heritage and history of the

building, there was a great variation in the configuration of the guest rooms and suites. Typically, this would be seen as a great budget and material challenge. However, it was an opportunity to create an enriching experience for guests, unique to Rosewood London, and now each suite has a different design story.

Can you tell us about the design?

The Manor House suite is fun, entertaining, unashamedly extravagant, luxurious and comforting, all sensed as you wander from room to room. Two large feminine stone statues greet

you upon the bathroom entrance, then you step inside for the full decadence of the bathing experience. The bath is the centrepiece, set in front of black lacquer, marble-framed walls, with His and Her dressing chambers on both sides. Two rooms, opposite the dressing chambers, house a private WC and spacious shower. It is the ultimate in luxury living.

And the materials? Each of the materials was chosen for its exquisite craftsmanship, from the marble bath and honed Carrara marble hexagonal mosaic floor to the beaten copper basins, bevelled mirrors and dark shagreen drawers of the His and Her vanity chests. The doors to the private shower and WC rooms are made of Verre églomisé by artist Lisa Stimpson. They add a very beautiful, opulent and elegant finishing touch.

1

Wood details

Wood adds warmth to a room design, softening the look of sharp lines and white sanitaryware. Furniture made from timber with striking grain can have lots of interest, accentuating the natural beauty of the material.

Wetstyle M furniture in oak finish, including 860mm double mirror cabinet, £1,590, 860mm wall-mounted storage cabinet, £754, and 910mm vanity drawer unit, £2,706, all from C.P. Hart



Design DIRECTIONS

The top ten: Our pick of the hottest new style trends in bathrooms now

FEATURE AMELIA THORPE



2 *Adventurous tiling*

Tiles are getting bolder, with striking geometric designs replacing demure neutrals. Use them to add originality to your bathroom, personalising it in a way that makes it totally yours. Lay plain-coloured tiles in unusual patterns, choose a bold statement colour or combine a few hues – it's all up to you.

These Colour Block Oak Blue Blend and Dust porcelain tiles from Mandarin Stone measure 20x20x1cm and they're £81.60 per sq. m. They can be used on walls and floors, and laid in several different ways to create modern geometric designs

'Grey works well as a primary colour or as a neutral backdrop, allowing you to add bold colour in accent pieces. The grey will soften the bolder colour – with lavender, orange or turquoise – and creams will always be classic when used with grey'

Lisa Hammond, senior designer, Ripples

3

Shades of grey

Grey is the modern neutral: its fifty (or more) shades offer warmer tones which blend beautifully with natural oak and burnished metals, its cooler and darker shades offering contrast with classic marble, steel or chrome.

Anthracite high gloss vanity unit, £2,473, with double washbasin, £3,122; mirror cabinet with horizontal light, £2,800; Crono bath, £5,999, with bespoke marble surround, priced to order, all from Ripples





4

Industrial influence

The industrial look of an old warehouse or factory is an on-trend style that works well, whatever your budget. It focuses on raw and rough surfaces, such as the concrete and the vintage mirror shown here which is teamed with utilitarian pieces that can be as individual as you like.

Cabus bathroom wall light, from £345, Christopher Wray


5

Hot on design

Now that underfloor heating offers such an effective way of heating our bathrooms, radiators have become less about heat output and thermal units and more about designer ways of keeping towels toasty. Choose a model that adds eye-catching character to your room, and doubles as somewhere to warm your towels and hang your clothes while you bathe.

Scaletta white freestanding towel rail **radiator**
by Tubes, from £960, West One Bathrooms





'The influence of warm-toned metals is everywhere. With brass, copper, rose gold and bronze effects being introduced in so many brassware ranges, these warmer tones have a profound effect on the mood of the room'

Rachel Martin, head of merchandising, C.P. Hart

6

Copper & Bronze

We are seeing strong opposition to the dominance of chrome in the form of copper and bronze taps, showers and fittings, echoing the trend seen elsewhere in the home in gleaming lights and accessories. Look out for burnished, unlacquered and weathered industrial finishes, which add extra depth to the quality of these warm-coloured metals.

Bisazza Bagno Diamante **basin** in black and copper, from £708, and **mixer** in black, £552, C.P. Hart



7

Distressed finishes

Different textures and finishes are a sure way of adding interest and subtle sophistication to your bathroom, from the raw, industrial feel of concrete to the vintage glamour of antiqued mirror or warmth of burnished metal. Team them with crisp white for a clean finish.

George bath in gloss white Ceramilux with a burned walnut wood finish and polished copper trim, H180xW110xD51.5cm, £10,680, Falper

8

Moorish Style

The history and culture of Spain, Morocco and other areas of North Africa have inspired a host of richly coloured motifs, celebrated in all kinds of architecture and design. Create your own patchwork of patterned Moorish tiles, teamed with the warm textures of natural stone and reclaimed timber.

Vintage Décor white/blue hexagon ceramic tiles, £42 per sq. m, sold in sets of four tiles only. Bluestone Stellar marble basin, £119, all Mandarin Stone

Q&a

BARBARA SALLICK
CO-FOUNDER AND HEAD OF DESIGN OF
BATHROOM BRAND, WATERWORKS

What are your favourite trends in bathroom surfaces at the moment? We are definitely seeing more interest in classic white marble with beautiful grey veining, such as Calacatta, and also in all kinds of grey stones, such as charcoal-coloured basalt. Grey works well because it blends beautifully and comes in both warm and cool tones.

And for brassware? Unlacquered brass is becoming very popular. It can either be polished for a pristine finish or it also looks great when it is left to develop its own, subtle and natural patina.

How about compact bathrooms and cloakrooms? Why not hang some colourful, graphic wallpaper or lay a patterned floor? Having a small bathroom is an opportunity to experiment and have some fun.

Can you tell us about your own bathroom at home? It's a small room, so I chose just a shower and used a 3x6in white tile on the walls, a black and white basket weave mosaic floor and a simple, traditional white pedestal sink. I have a glass shelf over the sink and always have a little sprig of flowers in a vase on there, and some pretty bottles with silver tops on a French oblong tray on the toilet tank. It couldn't be more simple, but it does always feel timeless and elegant.

How do you choose your favourite fittings for your home? Classic design is about a balance of proportion and scale. Trends in materials and finishes may come and go, but good design is timeless.

9

Classic elegance

Perhaps because we have so much Georgian, Victorian and Edwardian housing stock in the UK, the classic look has never really gone away. But now it's less about ornate embellishment and more about pared-back and balanced beauty. Team classic materials, such as cool marble and polished metals, with fixtures in refined and elegantly proportioned shapes.

RW Atlas two-leg single washstand in burnished nickel, £6,080, with Arabescato marble top, £1,440, and Manchester china undermounted basin, £805, Waterworks



'A simple frame or frameless enclosure opens up the bathroom and makes it lose that 'box in the corner' feel, creating a stylish showering focal point'

Edel Nicholson, marketing manager, Merlyn Showering

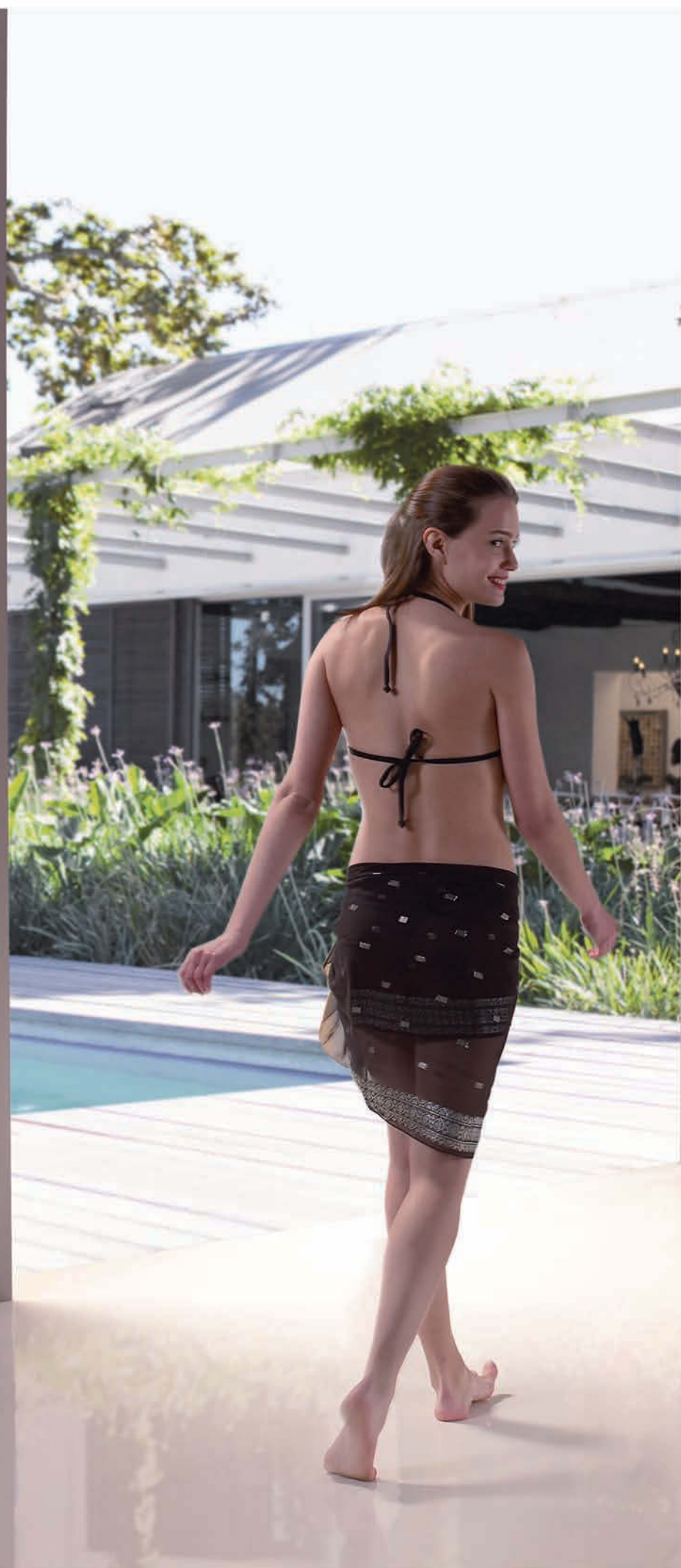
10

Less is more

In keeping with the minimalist, contemporary look, the frames of shower enclosures are edging ever thinner or even totally frameless. It's a trend which perfectly suits the move towards larger showering spaces, and works as well in a modern bathroom setting with contemporary furniture, as it does in a more classic setting, creating a total contrast in style.

The slender frame of this Series 8 Colour range **enclosure** has a warm, gold-coloured finish and costs from £1,495, Merlyn Showering





matki | SHOWERING



pure MATKI

The New Boutique Walk-In Shower Surround with slimline tray. Effortlessly luxurious and uniquely styled; the ultimate wet room experience, which keeps the water inside



CLEAN SLATE

Achieve a minimal look in an open space, opting for a monochrome palette of silver furniture and faucets, crystal lighting and jet black furniture. Inject colour with zigzag towels and an emerald vase

COMPILED BY KIRSTEN JONES

1 Calacatta Delicato **marble**, £474 per sq. m, Lapidica **2** Subway 2.0 **unit**, £779, Villeroy & Boch **3** IMO three-hole **basin mixer**, £724, Dornbracht **4** Missoni Home Giacomo **towels**, £82 each, Amara **5** Bocci 14.5 five-glass pendant **light**, £1,475, Heal's **6** Horizon frosted glass **soap dish & holder**, £35.10, Roper Rhodes **7** Eliptico oval cast iron **bath**, £2,496, Roca **8** Good Morning pedestal **table**, £359, Ligne Roset **9** Aquilegia flower **bottle**, £37, Dartington Crystal **10** VEGA **chair**, £610, Roche Bobois

FOR STOCKISTS, SEE PAGE 154



**BATHROOM
FURNITURE**

The Bette silhouette
bath, £4,602; Giro
furniture, from
£246, add style to
this monochrome
scheme. They're
both available
from C.P. Hart



LOOKING GLASS

The Cavendish mirror in chrome, £422, pairs perfectly with the new Etoile console and ceramic basin, priced from £888, available from Devon & Devon



Silver linings

Choose from these chrome accessories to hold, store and dispense

COMPILED BY KIRSTEN JONES

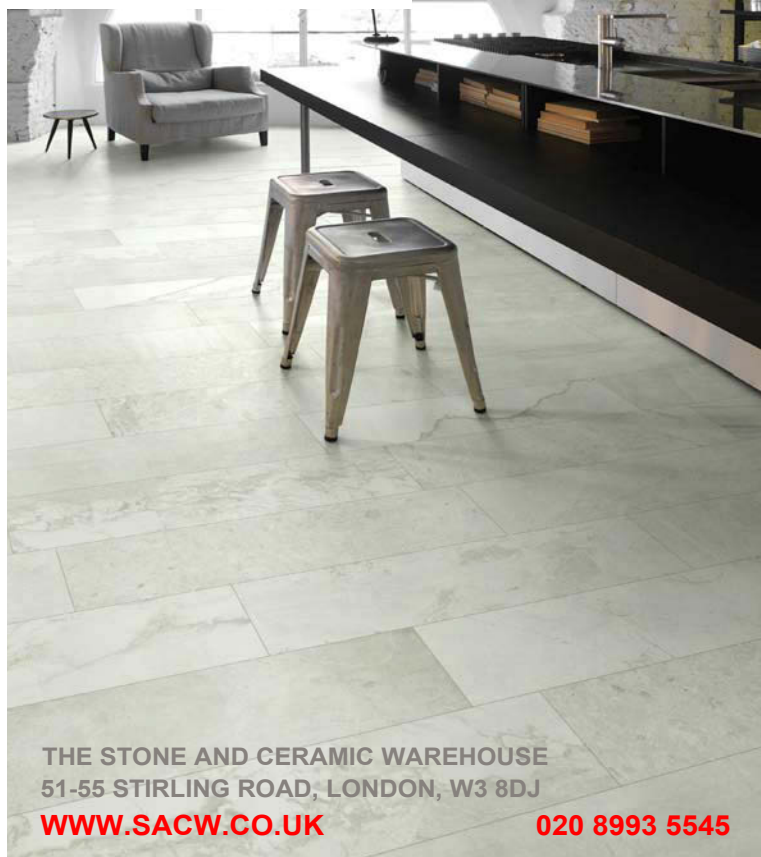


1 MOOD roll holder with cover, from £252, Porcelanosa **2** SELV tumbler holder, from £218 in polished chrome, Dornbracht **3** Media glass tumbler, £36.10, Roper Rhodes **4** Deck-mounted mirror in chrome, from £198, Drummonds **5** Wall-mounted shaving mirror, from £306, Perrin & Rowe **6** Plain and magnifying pivotal mirror, £303, Ripples **7** Nest liquid freestanding soap dispenser, £83, Vitra **8** Gessi Cono freestanding soap dispenser holder, £298, C.P. Hart **9** Ellington wall-mounted soap dispenser, £107, Bagno Design

FOR STOCKISTS, SEE PAGE 154



STONE & CERAMIC
WAREHOUSE
Est. 1963



THE STONE AND CERAMIC WAREHOUSE
51-55 STIRLING ROAD, LONDON, W3 8DJ

WWW.SACW.CO.UK

020 8993 5545

falmec

JUST COOKERHOODS

www.falmec.co.uk



euroline
Exclusive appliance importer

8 De Grey Square,
De Grey Road,
Colchester, Essex CO4 5YQ
W: www.euroline.org.uk
T: 0845 338 1761



ALLÓRA

Irresistibly Italian Handmade

www.allorashop.com 020 3701 4076

Bedrooms

MAKE A PATTERN

***Define your own
Scandi-style boudoir
with a geometric
pendant and slimline
black furnishings***

Cushions, from £16; Chic mirror with
shelf, £155; Asymmetric shiny gold
lamp shade, £57, all House Doctor



LIGHTING INSPIRATION • SPRING ROOM SCHEMES • FLORAL FABRICS

essential KITCHEN BATHROOM BEDROOM



Our handy **ekbb** app lets you carry pages of kitchen, bathroom and bedroom inspiration with you wherever you go. View sample pages for free, or subscribe to explore the entire magazine on the go.

Download the new mobile edition of **ekbb**
on your iPad, iPhone, Android device, PC, or Kobo eReader!

TO DOWNLOAD THE APP FOR FREE SEARCH FOR EKBB
1 ISSUE **£2.99** | 3 ISSUES **£7.99** | 6 ISSUES **£16.99**



Bedroom News

The latest launches, trends and inspiring things

WRITTEN BY EMMA FOALE



Layered LUXURY

In your bedroom not only is your choice of colour scheme important but so is a co-ordinated mix of textures. One of the latest moodboards from Christy shows you how to combine neutrals with soft and tactile materials for a comfortable bedroom (*as shown, right*) that you'll enjoy relaxing in at the end of the day. christy-towels.com.



Padua double duvet, £120; Oxford pillowcase pair, £45; Standard pillowcase pair, £25; Square pillowcase pair, £20; Cushion, £30, all Christy and available exclusively from John Lewis



BLOCK COLOUR

Reminding us of Modernist art, the Kelim range from Ferm Living features cushions and rugs with bold block colour. The handmade cushions are available in a variety of geometric-style designs. We'd love one of each to scatter over our bed or sofa. The statement semi-circular cushion shown here is from £50. fermliving.com.

Let's GET COSY

Make room in your master suite for the 1950s-style Metro sofa – it has deep seats with high arm rests as well as cushions with extra bounce. It's designed and made by Delcor who specialise in British made-to-measure sofas. Priced from £1,384, you can choose from four sizes and 10,000 fabric options. delcor.co.uk.

MADE IN INDIA

A treat for your feet and your eyes, the new handwoven rugs from Urbanara offer warmth underfoot. They're made in India from 100 per cent natural materials and we love the simple patterns that will make a talking point for any floor. The Satara rug in Warm Orange is from £169 and the Sisai rug in white and black is from £149. urbanara.co.uk.



RH REED HARRIS

New Tile Collections In Store
or Shop Online at

welovetile.es

27 Carnwath Road, Fulham, LONDON SW6 3HR.
Unit 7 iO Trade Centre, Deacon Way, READING RG30 6AZ.

ELLIS
furniture



made in
Great Britain

Enjoy the benefits
of becoming an
Ellis retailer and
contact us today...

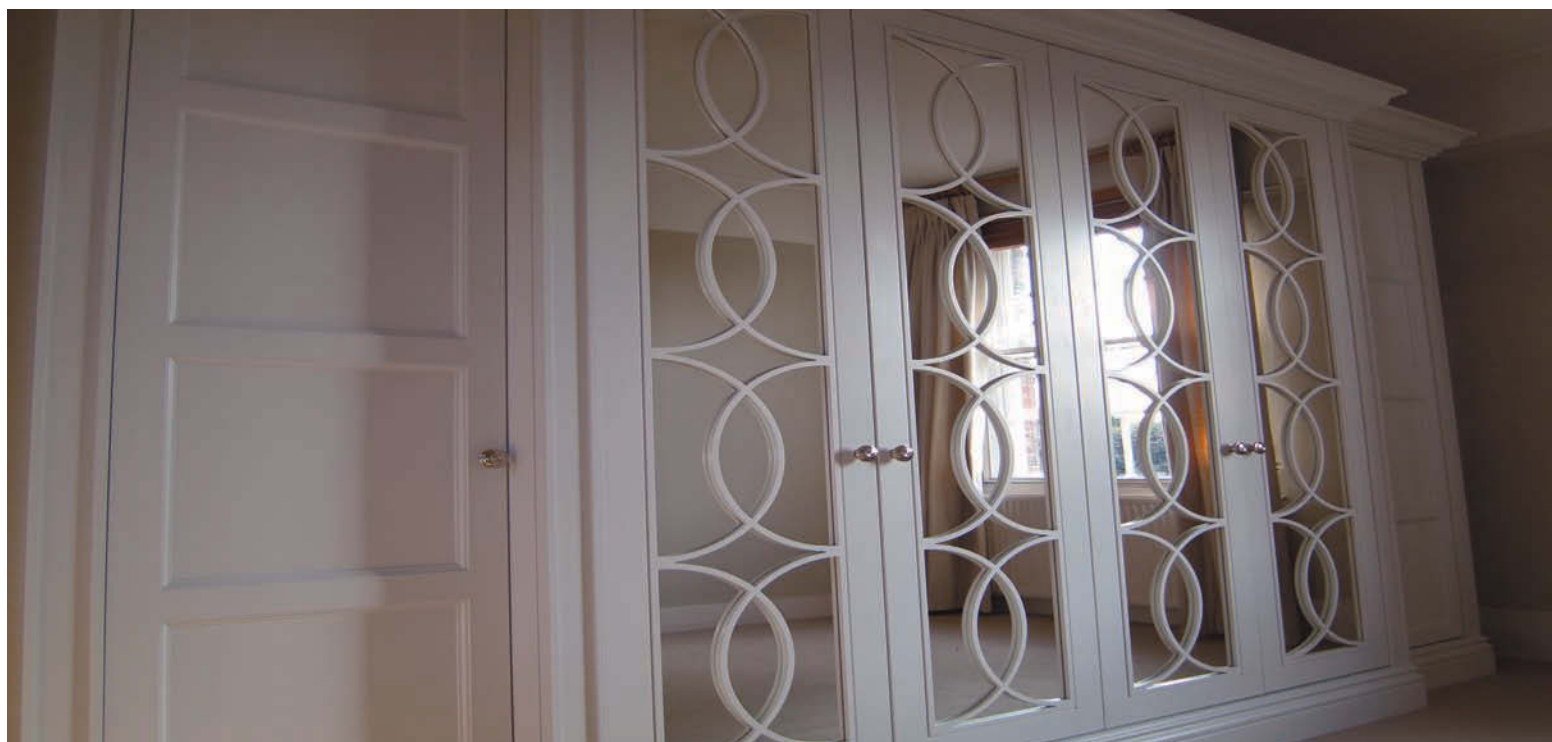
- Short lead times and national supply
- Full marketing support package
- Rigid made to order furniture
- Leading design software
- Great retailer rewards
- Exclusive areas available

Become part of it...Call 01484 514212

www.ellisfurniture.co.uk



THE
— HERITAGE —
WARDROBE COMPANY



Luxury Crafted Wardrobes - Dressing Rooms - Walk-in Wardrobes

London: 0203 355 8575 Kutsford: 01565 817 327

www.theheritagewardrobecompany.com

Colour CONFIDENCE

Taking its cue from the Pantone Colour of the Year for 2015, The Sofa and Chair Company has added Marsala to its fabric colour options. It's a seductively rich shade which creates a confident impact, especially on the Windsor ottoman (*shown*), £645. thesofaandchair.co.uk.



Doing it for THE KIDS

Little Loafers is the appropriately named first kids collection from Loaf. Amongst the 10 new pieces for this range, is the adorable Possum bed (*shown*) which is hand-carved from reclaimed fir with a beached timber finish. It's the perfect spot for some bedtime reading before the little sleepy head enjoys a good night's rest in their new bed. It's 395. loaf.com.



A DESIGN PIECE

In an exciting collaboration with well-known fashion designer Paul Smith, Joined + Jointed has revealed a limited edition version of its bestselling Willow chair. Upholstered in Paul Smith fabric, it has a comfortable seat woven with dense, semi-lustrous yarns and comes in oak or walnut. From £395 each. joinedandjointed.com.



TASTE OF THE SEASON

We're getting a strong Indian summer vibe from the new-season fabric collections from the John Lewis Design Studio. The Fusion range offers an array of patterns from Ikat to zig-zags and a mix of warm and cool colours such as Smoke, Putty, Indian Blue and Claret red. Fabrics are printed in the UK and prices start from £15 per m. johnlewis.com.



Bright ideas

In your bedroom the right combination of lighting will create the perfect atmosphere to relax and unwind. Here are some dreamy considerations

FEATURE **EMMA FOALE**

1930s STYLE

Use the adjustable arm on the Bestlite BL5 wall-mounted lamp to direct light where you need it for bedtime reading. Shown here in matt white and brass, it's available from around £412 from Gubi



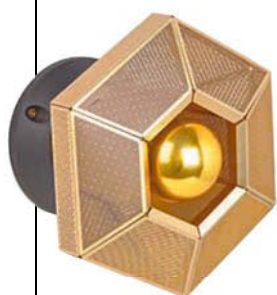
INDUSTRIAL TREND

Factory-style and vintage designs are so popular right now. The Eastern Bloc machinists light, £528 from Skinflint, has a polished aluminium shade and adjustable shade and arm



ENCHANTED DREAMS

The Ivy Shadow wall light in Forest Gold with a semi-cylinder Dune Grass linen shade is priced at £1,108. It has been designed by Tord Boontje for Porta Romana as part of the Enchanted Forest collection



CELL DIVISION

Designer Tom Dixon's Cell wall light is made from etched polished brass. It filters light rays to create intricate shadows on ceilings, walls and floors



DELICATE SHINE

The prismatic glass shade of the Circus wall light refracts light to provide an even, glare-free illumination. It's £105 from Original BTC

ATTRACTIVE DETAILING

Right With a beautiful decorative glass finish, the Medina Smoke antique brass wall light is very opulent. The tassels are exclusively designed in collaboration by leading international furnishing trimmings designer, Wendy Cushing. It's £365 from Heathfield & Co

MODERN CLASSIC

Below The Caravaggio wall light by Cecilie Manz is made of steel and die-cast zinc and is finished in a stylish semi-matt lacquer. You can tilt or rotate it 180 degrees and it emits a soft, gentle light. It's £209 from Light Years



'If you do a lot of reading in bed, look for designs which can be angled as you require'



Wall lights

Think of this type of lighting as your bedside companion; it should provide you with the focal light you need to get lost in a good book at the end of the day but not be too harsh so as to be uncomfortable to live with. Co-founder of Skinflint, Sophie Miller explains: 'Wall lights work especially well in a bedroom, particularly when space is at a premium as they eliminate the need for a bedside table or cabinet. Look for designs which can be angled, such as our machinists lights, so you can direct the light. Choosing shades which point downwards rather than uplighters helps create a softer glow, which makes for a far more peaceful atmosphere.' In terms of design there's a lot of choice, whether you want something simple and unfussy or if you want a decorative style that will embellish your bedroom wall.

BOLD AS BRASS

Right You can suspend this sleek light from your ceiling to create direct spotlight where needed. The Cask pendant light in turned brass has a shape inspired by the barreled silhouette of a brewing cask. It's £338 from Bert Frank

MADE BY HAND

Far right Made using handwoven oak, this hanging Swill light is the result of a collaboration between Lorna Singleton, the swiller, and Sebastian Cox, furniture designer-maker. They're made to order and prices start from £195 for the trio. You can find them available from The New Craftsmen and Sebastian Cox



Pendants

Pendant lighting is often the most fun to experiment with and there are many different types and styles. Bert Frank founder and head designer Robbie Llewellyn says: 'Use multiple pendants to illuminate specific areas rather than only one main central pendant. This is effective if you're trying to achieve the current trend for zonal lighting. The Cask pendant offers a gentle and warming light ideal for reading in bed and removes the need for bedside table lamps. This method requires some prior planning and thought as these lights will need to be controlled in different areas of the room too, for example light switches by the bed if using bedside pendants.' Depending on whether you go for a glass, metal or wood lampshade, for example, you'll see a variation in the emittance of light and the ambience is created.



'The current trend for zonal lighting is achieved by using multiple pendants for specific areas rather than one main central pendant'



The Scandinavian-made Cohen pendant light is adjustable in height and is from £89 at Heal's

The Oregon bronze pendant, £57.50 from David Hunt, has a traditional lampshade cage

In a pretty Opal Jade coloured glass, the oval Leoni pendant is £310 from Luku Home

Warm-coloured metal finishes are on trend. The modern Bilbao pendant is £90 from dar lighting

Funnel is a hand-blown crystal lampshade by Young & Battaglia. It's £495 from Mineheart

Design vs Function

**ADVICE FROM MELISSA MUSLIN,
LIGHTING BUYER AT HEAL'S**

- Lighting in the bedroom shouldn't be limited to pendants alone. Bedside table lamps or wall lights fitted either side of the bed are where design and function work in unison. It is more practical to be able to control the lighting in the room from the comfort of your bed, and design features such as directional light and dimmers improve both the function as well as creating a more desirable form.
- A light that's compatible with a dimmer should be a priority in the bedroom. This will enable you to create ambient lighting if necessary without limiting you to it. This rules out any CFL's (Compact Fluorescent Lights), but if you are energy conscious, there are many LED bulbs available which are now dimmer compatible.
- We're seeing a lot of traction in ceramic and metal finishes, for example brass and copper. Pendants are the best-selling piece type at the moment and they allow you to create a design moment in any room while still serving a very functional purpose.

COMBINE & CONTRAST

The Botega pendant is designed by Italian designer Enrico Zanolla who wanted to reinvent a traditional pendant with a ceramic material. It's available in either black or white and the interior can either be left as bare ceramic or given a metallic finish. It's £190 from Clippings.com

NEW HEIGHTS

The Radon floor lamp has a geometric form with tripod legs and a rounded head. The light is multi-directional and adjustable which means it's easy to move around the room and flexible to your needs. It's priced at £439 from Light Years



DESIGN ICON

Right The iconic Grashoppa lamp was first produced in 1947 and it still holds a place in modern homes. This floor lamp in jet black has a tilted tripod stand in tubular steel and a aluminium conical shade. It's from £579 at Gubi

CONCRETE SOLUTION

Below Embracing an industrial style, the Concrete floor lamps by Dutch designer Renate Vos are from Clippings.com. Concrete is combined with silicone rubber for an interesting fusion of soft and hard. The lamp emits a warm light which will brighten any dark corner. Priced from £150



'Floor lights introduce task and mood lighting and make a visual statement all at the same time'



Floor lamps

If you have the space, don't be afraid to go bold with your choice of floor lighting. The interesting trend for natural and mixed materials all over the home has filtered into lighting and we're now seeing designers experiment with materials like concrete, glass and wood as well as metallics.

'As floor lights need no installation they're an easy way to introduce both task and mood lighting into your bedroom and make a visual statement at the same time. Adjustable arm floor lights are great for an empty corner, and can even make dramatic bedside lights. Alternatively, an elegant bone china shade will gently diffuse light to create a soft intimate glow, ideal for creating atmosphere,' advises Peter Bowles, founder and managing director at Original BTC. It's also important to note that before buying or going shopping, it's a good idea to measure your room from floor to ceiling to ensure you get the height just right.

POLISHED LOOKS

Creating a soft ambient light, the Base copper floor lamp is ideal for brightening up a dark corner and adding atmosphere. It's £845 from Tom Dixon

NORDIC VIBE

Bearing a quirky similarity to a tree, the metal and light wood Scandinavian floor light has lampshades hanging from wooden arms or branches. It's £168 from The Lighting Store



SOFT GLOW

Overlapping tiers of fine bone china are a feature of the Pembridge floor lamp which will allow light to gently diffuse into your room. It's £999 from Original BTC

WARM AMBIENCE

The Louise floor lamp by Tobias Grau features a mouthblown glass shade combined with concrete and polished aluminium. It's £1,250 from Chaplins



Table lamps

Dressing your room involves careful consideration of table lighting. You can rest assured that you'll find something to your taste as there's so many options out there. A lampshade should complement the lamp base and it really comes down to your personal preference whether you choose a more traditional rounded shape base or go for one of the geometric-style designs with a contemporary edge. Design director Donna Gridley from Heathfield & Co says: 'The design of the lamp very much depends on its purpose. If purely decorative, and to create a wow effect, find something that complements and enhances your scheme. The lamp needs to be at a height that allows you to read without being blinded by the glare of the bulb.' Consider the size and scale of your table lamps alongside any other lighting you plan to include and decide on what to make the focal point.



SHORT STATURE

Far left The Dori lamp spreads its light in different directions for a relaxing ambience. A mix of materials, with a marble base and metal diffuser, add to the opulent feel of these lamps. Tommaso Caldera has created this design for Contempo Italia, which costs from £570 and is available from Chaplins

SIMPLE ELEGANCE

Left The Lupin lamp is handblown in blue and grey glass as shown but it's also available in brown. Its name draws on its similarity in shape to the tall flower which also creates a feeling of beauty. It comes with the asymmetric card shade and is priced at £1,512 from Ochre

'If your purpose for choosing a light is purely decorative and for a wow effect, find something that complements and enhances your scheme'



The Atollo table lamp is on-trend geometric and can be controlled by a dimmer. It's £1,049 from LuxDeco

A vanilla-lined lampshade sets off this Studded iron lamp with a Moroccan twist. It's £120 from Raft

In beautiful blown glass with colour detail, the Neried Lustre lamp is £401 from Heathfield & Co

A reliable classic, the Tinsley table lamp by Ralph Lauren Home is in white and natural brass, £1,150

Made of perforated sheet metal for an industrial feel, the Hexx table lamp is £516 from Foscarini

**UNDERSTATED
APPEAL**

Not just ideal for beside your bed, table lamps can also be used to brighten up a side table or desk area. The Kensington handblown glass table lamp looks sophisticated with a black cotton retro shade. Shown in brass, it's £99 from Atkin & Thyme



LIGHTING DIRECTORY

The next in our collectable directory guides; this month our round-up of companies specialising in lighting



ANDREW MARTIN
020 7225 5100
andrewmartin.co.uk

ANGLEPOISE
023 9222 4450
anglepoise.com

ASTRO LIGHTING
01279 427001
astrolighting.co.uk

ATKIN & THYME
0203 768 7775
atkinandthyme.co.uk

BERT FRANK
0208 737 0512
bertfrank.co.uk

BLUE ISLE
01425 653031
blueisle.co.uk

BUSTER & PUNCH
020 7407 0888
busterandpunch.com

CHAPLINS
020 8421 1779
chaplins.co.uk

CHARLES EDWARDS
020 7736 8490
charlesedwards.com

CLIPPINGS.COM
020 7060 7422
clippings.com

CREATIVE MARY
creativemary.com

DÄR LIGHTING
darlighting.co.uk

DAVEY LIGHTING
01993 882251
davey-lighting.co.uk

DAVID HUNT
01295 672 200
davidhunt-lighting.com

EBB AND FLOW
01453 836 060
ebbandflowltd.co.uk

FLOS
020 7681 9933
flos.com

FOSCARINI
foscarini.com

FRENCH CONNECTION
0333 400 3285
frenchconnection.com

GARDEN TRADING
0845 608 4448
gardentrading.co.uk

GUBI
gubi.com

HEAL'S
0870 024 0780
heals.co.uk

HEATHFIELD & CO
01732 350450
heathfield.co.uk

HIND RABII
hindrabii.com

HOLLOWAYS OF LUDLOW
020 7602 5757
hollowaysofludlow.com

JIM LAWRENCE
01473 826685
jim-lawrence.co.uk

JULIAN CHICHESTER
020 7622 2928
julianchichester.co.uk

LASVIT
020 7490 2004
lasvit.com

LIGHT YEARS
lightyears.dk

LIGNE ROSET
0870 777 7202
ligne-roset.co.uk

LOUIS POULSEN
louispoulsen.com

LUKU HOME
020 8943 3683
lukuhome.com

LUXDECO
020 3586 1536
luxdeco.com

MINEHEART
0845 467 4580
mineheart.com

NORTHERN LIGHTING
northernlighting.no

OCCA-HOME
0330 363 0330
occa-home.co.uk

OCHRE
020 7096 7372
ochre.net

OKA
0844 815 7380
okadirect.com

ORIGINAL BTC
020 8969 3561
originalbtc.com

POOKY
0207 351 3003
pooky.com

PORTA ROMANA
01420 23005
portaromana.co.uk

RAFT
020 8450 5078
raftfurniture.co.uk

RALPH LAUREN HOME
020 7535 4600
ralphlaurenhome.com

SEBASTIAN COX
020 8316 5679
sebastiancox.co.uk

SHOREDITCH LIGHTING
020 7101 9473
shoreditchlighting.co.uk

SKINFLINT DESIGN
01326 314528
skinflintdesign.co.uk

THE LIGHTING STORE
020 7487 5070
thelightingstore.co.uk

TOM DIXON
020 7183 9737
tomdixon.net

VILLAYERDE
020 7610 9797
villayerdeltd.com

Coming next month in...

essential

KITCHEN

BATHROOM BEDROOM

Using mixed materials in the kitchen, how to plan your bathroom and walk-in wardrobes, as well as the most inspiring readers' homes



OUR MAY ISSUE INCLUDING 50+ PAGES OF REAL LIFE KITCHENS
ON SALE 2ND APRIL



Fresh FINISH

Team a cool spring palette with your contemporary bedroom by opting for a selection of pastel coloured textiles, a natural wooden bed and clear glassware. Inject on-trend style with matt black lighting and eclectic art

COMPILED BY KIRSTEN JONES

- 1 Classic Clarendon **throw**, £250, Tori Murphy 2 Spatial **cushion cover**, £47.40, Yves Delorme 3 Whitechapel Break Of Dawn **print**, £50, Neptune 4 N°317 table **lamp** by DCW éditions, £351, Made In Design 5 Wästberg Sempé w103b table **lamp**, £591, Nest 6 House by John Lewis linear **rug**, from £80, John Lewis 7 Flower tied bouquet **vase**, £25, LSA 8 Kingsize Woody **bed**, £875, Loaf 9 Zinc **trolley**, £139, Bloomingville 10 Brass **cup**, £24, Holly's House

FOR STOCKISTS, SEE PAGE 154





BEDROOM TEXTILES

This bedroom features the new Urban Collective range, including Urban **bedding**, from £27; Urban herringbone **sham** in grey, from £49; Urban **throw** in yellow and grey, £119; Urban **sham** in yellow and grey, £49; Urban herringbone **bedspread** in grey, from £149, all the Lexington Company



PRETTY PETALS

The Secret Garden Collection features a **sofa** in Jeffery Rose Tree in Golden vintage velvet, £130 per metre, and **cushion** in Orchard vintage velvet, £130 per metre, both Liberty Art Fabrics

Natural world

Refresh and upholster with these botanical-themed fabrics for spring

COMPILED BY KIRSTEN JONES



1 Bewick birds fabric, £84 per m, Lewis & Wood **2** Arnazilia Hummingbird fabric, £56 per m, Harlequin **3** Jaipur Mogul-inspired fabric, £71 per m, Zoffany **4** Penglai Chinese garden fabric, £75 per m, Nina Campbell at Osborne & Little **5** Raphaëla tapestry-inspired fabric, £83 per m, Sandberg **6** Saphira Blush printed cotton-satin fabric, £45 per m, Romo **7** Beach Hut fabric from the Whitewood collection, £49.90 per m, Linwood **8** Tetbury Lurniere fabric, £85 per m, Bluebellgray **9** Summer Tree silk fabric, £86 per m, Sanderson

FOR STOCKISTS, SEE PAGE 154

Win

ONE OF FOUR WASHING MACHINES ON
OFFER FROM FISHER & PAYKEL!



Do you want a washing machine to help make laundry time less of a chore? We've teamed up with premium appliance brand Fisher & Paykel to give you the chance to win one of four WH8060P1 washing machines, worth £749 each!

This 8kg capacity washing machine can cater to your every need with a whole host of useful and reliable functions. If you're in a hurry and need to wash some clothes quickly, then you can pop on the Super Quick 15 cycle, one of 13 specific programmes, which is able to wash a 2kg load in only 15 minutes, made possible due to the brand's unique Vortex Wash technology. Or, if you've put some washing on but have missed out an item of clothing, you can use the Add A Garment function, which lets you put in extra clothes even if the machine is mid-cycle.

Do you have an open-plan space and need quiet appliances that can be put on at any time of the day? The WH8060P1 uses an innovative Direct Drive motor and SmartDrive™ technology to create a machine that is so quiet it has been awarded the Quiet Mark seal of approval. So you can feel confident putting a load of washing on at any time of day or night, without disturbing the household. To win this washing machine, head over to our website to enter this competition now!

For more information call 08000 886 601
or visit the website at fisherpaykel.co.uk

For your chance to win, answer the following question:

WHAT IS THE CAPACITY OF THE WH8060P1 MACHINE?

A 7kg **B** 8kg **C** 9kg

TO ENTER VISIT

ekbbmagazine.co.uk and
click on the 'Competitions' option.

Fisher & Paykel

RULES OF ENTRY: 1) Competition closes at midnight on 30th April 2015. Winners will be notified after the closing date. 2) Four winners will receive one WH8060P1 washing machine from Fisher & Paykel valued at £749. Mainland UK delivery is included. Installation is not included. Subject to availability, non transferable or refundable. 3) No cash alternative will be given. 4) Open to residents in the UK (mainland), over age of 18, except employees of Hubert Burda Media UK and Fisher & Paykel. 5) Only one entry per person. 6) Winners must be willing to participate in publicity if required. 7) The editor's decision is final. Correspondence will not be entered into. 8) Winners are selected at random, from correct entries received, after the competition end date. 9) Hubert Burda Media UK or Fisher & Paykel may use your details to advise of products and services. Details are occasionally available to vetted companies. 10) Allow 8-10 weeks from selection to completion. 11) Reproduction of this competition, in whole or part, without written permission is prohibited. Hubert Burda Media UK reserves the right to prosecute offending parties.

Subscribe now for only £8.50*

APRIL OFFER TREAT YOURSELF TO THREE ISSUES AT THIS SPECIAL PRICE



By becoming a subscriber, you'll be the first to see our selection of inspirational ideas for your kitchen, bathroom and bedroom



Download the new mobile edition of *EKBB* on your iPad, iPhone, Android device, PC or Kobo eReader!



TO SUBSCRIBE, VISIT ***essentialsubscriptions.co.uk*** CALL 01778 392471
OR EMAIL US AT ***subscriptions@warnersgroup.co.uk***

*For a postal subscription: Direct Debit for only £8.50 including delivery for three issues (Special April offer for UK only). Your subscription will automatically renew every quarter. You can cancel a Direct Debit at any time simply by contacting your bank or building society. Written confirmation may be required. Please also notify us via email at subscriptions@warnersgroup.co.uk. Other costs are as follows: **Europe** (airmail) £95 **USA** £120 **Rest of world** (airmail) £145.
**Choose from the following payments for an app subscription: 3 back issue bundle for £7.99 or 1 issue for £2.99. 3 month recurring subscription for £7.99. 6 month recurring subscription for £16.99.

Stockists

Contact details for the products, shops and designers in this issue



84

A ABODE 01226 283434
abodedesigns.co.uk
AFTER NOAH 020 7359 4281
afternoah.com
AGA 0845 712 5207
agaliving.com
ALEXANDER & PEARL
020 8508 0411
alexanderandpearl.co.uk
AMARA 0800 587 7645
amara.com
ANA BARRETO INTERIORS
020 8744 9777
anabarretointeriors.com
ANTHROPOLOGIE 020 7529 9800
anthropologie.eu
ART 020 7183 1900 art.co.uk
ARTEDONA artedona.com
ATKIN & THYME 0203 768 7775
atkinandthyme.co.uk
ATLANTIC SHOPPING 01212 301644
atlanticshopping.co.uk

B BAGNO DESIGN 020 7553 6999
bagnodesign.org
BARNES OF ASHBURTON
01364 653613
barnesofashburton.co.uk
BERT FRANK 0208 737 0512
bertfrank.co.uk
BISQUE 020 7328 2225
bisque.co.uk
BLOOMINGVILLE
bloomingville.dk
BLUEBELLGRAY 01412 210724
bluebellgray.com
BOFFI 020 7629 0058
boffi.com
BRITISH STANDARD
020 7870 7688
britishstandardcupboards.co.uk

BROSTE COPENHAGEN
0045 363 90 300
brostecopenhagen.com
BRYAN TURNER 01953 601567
bryanturnerkitchens.com

C C.P. HART 0845 873 1121
cphart.co.uk
CAESARSTONE caesarstone.co.uk
CALACATTA calacatta.com
CALLIGARIS 020 8977 3371
calligarisinteriors.com
CAPLE 01179 381900
caple.co.uk
CHAPLINS 020 8421 1779
chaplins.co.uk
CHELSOM 01253 831400
chelsom.co.uk
CHRISTOPHER WRAY
020 7013 0180
christopherwray.com
CLIPPINGS.COM 020 7060 7422
clippings.com
COUSINS AND COUSINS
020 7482 4009
cousinsandcousins.com
COX & COX 0844 858 0734
coxandcox.co.uk
CUBIC STUDIOS 020 3176 0146
cubicstudios.com
CUE & CO OF LONDON
020 7731 4728 cueandco.com

D DADA 020 7631 2345
moltenidada.co.uk
DAR LIGHTING darlighting.co.uk
DARTINGTON CRYSTAL
01805 626221
dartington.co.uk
DAVID HUNT 01295 672 200
davidhunt-lighting.com

DAVONPORT 01206 760800
davonport.com
DE FERRANTI 020 7384 4424
deferranti.com
DESIGNSPACELONDON
020 7487 5077
designspacelondon.com
DEVOL 01509 261000
devolkitchens.co.uk
DEVON & DEVON 020 7221 5137
devon-devon.com
DISCOVER & DELIVER
020 7371 0303
discover-deliver.com
DORNBRACHT 02476 717129
dornbracht.com
DRUMMONDS 01483 237202
drummonds-uk.com

E EBURY HOME & GARDEN
07984 817050
eburyhomeandgarden.com
ELICA 01252 351111
elica.co.uk
EVOLINE 01225 330242
evoline.co.uk

F FALPER 07770 761656
falper.it
FARROW & BALL 01202 876141
farrow-ball.com
FIRMDALE HOTELS
firmdalehotels.com
FISHER & PAYKEL 0845 066 2200
fisherpaykel.co.uk
FLOCK 07756594091
flock.org.uk
FOSCARINI foscarni.com
FRANKE 01614 366280
franke.co.uk
FRENCH CONNECTION
0844 557 3285
frenchconnection.com

G GAGGENAU 0844 892 9026
gaggenau.co.uk
GALERIE 01892 700730
galeriewallcoverings.com
GAMADECOR gama-decor.com
GARDEN TRADING 0845 608 4448
gardentrading.co.uk
GESSI 0039 01634 54111 gessi.it
GO MODERN 020 7731 9540
gomodern.co.uk
GRAHAM & GREEN 0845 130 6622
grahamandgreen.co.uk
GUBI gubi.com
GUILD ANDERSON 01747 820449
guildandersonfurniture.co.uk

H HABITAT 0844 499 1111
habitat.co.uk
HARLEQUIN 0845 123 6805
harlequin.uk.com
HARVEY JONES 0800 389 7365
harveyjones.com
HEAL'S 0870 024 0780
heals.co.uk
HEATHFIELD & CO 01732 350450
heathfield.co.uk
HI-MACS® BY LG HAUSYS
01892 704074 himacs.eu

HOLLOWAYS OF LUDLOW
020 7602 5757
hollowaysofludlow.com
HOLLY'S HOUSE 020 7736 2222
hollys-house.com
HOUSE DOCTOR 0045 97 25 27 14
en.housedoctor.dk
HUMPHREY MUNSON 01371 821300
humphreymunson.co.uk

I IAN MANKIN 020 7722 0997
ianmankin.co.uk
IDYLL HOME 01630 695779
idyllhome.co.uk
INDIA JANE 020 8799 7166
indiajane.com
INSINKERATOR 01923 297880
insinkerator.co.uk

J JOHN LEWIS 0845 604 9049
johnlewis.com
JOHN LEWIS OF HUNGERFORD
01488 688100
john-lewis.co.uk

K KATHARINA EISENKOECK
katharinaeisenkoeck.com
KOHLER 0844 571 0048
kohler.co.uk

L LA CORNUE 0870 756 1235
lacornue.co.uk
LAMPS AND LIGHTS 01223 750153
lampsandlights.co.uk
LAPICIDA 020 3012 1000
lapicida.com
LEWIS & WOOD 01453 878517
lewisandwood.co.uk
LEXINGTON 0046 854 55 58 00
lexingtoncompany.com
LIBERTY 020 7734 1234
liberty.co.uk
LIEBHERR 08444 122 655
myliebherr.co.uk
LIGHT IQ 020 8749 1900
lightiq.com
LIGHT YEARS lightyears.dk
LIGNE ROSET 0870 777 7202
ligne-roset.co.uk
LINWOOD 01425 461176
linwoodfabric.com
LISA STIMPSON, NEW YORK
lisastimpson.com
LITTLE GREENE 0845 880 5855
littlegreene.com

LLOYD LOOM OF SPALDING
01775 712111 lloydloom.com
LOAF 0845 459 9937
loaf.com
LONDON DESIGNER FURNITURE LTD
020 8546 1977
londondesignerfurniture.com
LSA 01932 789721
lsa-international.co.uk
LUKU HOME 020 8943 3683
lukuhome.com
LUXDECO 020 3586 1536
luxdeco.com

M MADE 0845 557 6888
made.com
MADE IN DESIGN 020 7692 4001
madeindesign.co.uk
MANDARIN STONE 01600 715444
mandarinstone.com
MARBLE CITY 0208 871 1191
marble-city.co.uk
MARTIN MOORE 020 7385 9666
martinmoore.com
MELFORD STONE
07969 826289
MERLYN SHOWERING
00353 56 779 1555
merlynshowering.com
MIELE 0845 365 6603
miele.co.uk
MINEHEART 0845 467 4580
mineheart.com
MIYO STUDIO miyostudio.nl
MODULNOVA modulnova.it
MONEYHILL INTERIORS
01923 773906
moneyhillinteriors.com
MOWLEM & CO 020 7610 6626
mowlemandco.co.uk
MUUTO muuto.com



80

Contacts

The fastest way to find your dream kitchen, bathroom and bedroom!



FOR FURTHER INFORMATION ON
EKBB ADVERTISERS SIMPLY CLICK ON...

www.ekbbmagazine.co.uk/responses

N NEFF 0844 892 9033
neff.co.uk
NEIL LERNER 020 7433 0705
neillerner.com
NEPTUNE 01793 427427
neptune.com
NEST 01142 433000
nest.co.uk
NEWGATE CLOCKS 01691 679994
newgateclocks.com
NINA CAMPBELL 020 7225 1011
ninacampbell.com
NOM LIVING 020 7515 4422
nomliving.com
NORDIC HOUSE 0845 475 1610
nordichouse.co.uk

O OCCA-HOME 0844 879 4258
occa-home.co.uk
OCHRE 020 7096 7372 ochre.net
ONEDEKO 020 7375 3289
onedeko.co.uk
ORIGINAL BATHROOMS
020 8940 7554
original-bathrooms.co.uk
ORIGINAL BTC 020 8969 3561
originalbtc.com
OSBORNE & LITTLE 020 8812 3030
osborneandlittle.com

P PACOJET pacojet.com/en
PERRIN & ROWE 01708 526361
perrinandrowe.co.uk
PIP STUDIO pipstudio.com/en
PLUM & ASHBY 020 8988 5222
plumandashby.co.uk
POLIFORM 020 7368 7600
poliformuk.com
PORCELANOSA 0800 915 4000
porcelanosa.com
PORTA ROMANA 01420 23005
portaromana.co.uk

Q QUOOKER 020 7923 3355
quooker.co.uk

R RAFT FURNITURE 020 8450 5078
raftfurniture.co.uk
RALPH LAUREN HOME
020 7535 4600
ralphlaurenhome.com
RECLAIMED FLOORING COMPANY
0207 250 1108
reclaimedflooringco.com
RETROFURNISH 0131 208 2235
retrofurnish.desk.com
RIPPLES 0800 107 0700
ripples.ltd.uk
ROCA 01530 830080 uk.roca.com
ROCHE BOBOIS 020 7431 1411
roche-bobois.com
ROCKETT ST. GEORGE 01444 253375
rockettstgeorge.co.uk
ROMO 01623 756699 romo.com
ROPER RHODES 01225 303900
roperrhodes.co.uk
ROSE & GREY 01942 402318
roseandgrey.co.uk
ROSEWOOD LONDON HOTEL
020 7829 9888
rosewoodhotels.com/en/london
ROUNDHOUSE DESIGN
020 7736 7362
roundhousedesign.com

S SANDBERG sandbergab.se
SANDERSON 0844 543 9500
sanderon-uk.com
SEBASTIAN COX 020 8316 5679
sebastiancox.co.uk

SECOND NATURE 01325 505539
snccollection.co.uk
SIEMATIC 01612 466010
siematic.co.uk
SIEMENS 0844 892 9044
siemens-home.co.uk
SIMON ORRELL DESIGNS
020 7371 9339
simonorrelldesigns.com
SKANDIUM 020 7584 2066
skandium.com
SKINFLINTDESIGN 01326 314528
skinflintdesign.co.uk
SMUG 020 7354 0253
ifeelsmug.com
SOFAS & STUFF 0808 178 3211
sofasandstuff.com

T TAZZARI DESIGN
tazzaridesign.com
TEAM7 team7.at/en
THE CONRAN SHOP 0844 848 4000
conranshop.co.uk
THE FRENCH HOUSE 020 7831 1111
thefrenchhouse.net
THE LIGHTING STORE 020 7487 5070
thelightingstore.co.uk
THE WHITE COMPANY
0844 736 4222
thewhitecompany.com
TOM DIXON 020 7183 9737
tomdixon.net
TONCELLI toncelli.it
TONY CHI AND ASSOCIATES
tonychi.com
TORI MURPHY 07958 688519
torimurphy.com
TOTO 020 7831 7544
eu.toto.com
TWENTYTWENTYONE
020 7288 1996
twentytwentyone.com

U UNIQUE AND UNITY
0845 605 9699
uniqueandunity.co.uk

V VICTORIA + ALBERT BATHS
01952 221100 vandabaths.com
VILLEROY & BOCH 020 8871 4028
villeroy-boch.com
VITRA 01235 750990
vitra.co.uk
VIVID LIGHTING 01905 821 144
vividlighting.co.uk

W WATERWORKS 07974 430433
waterworks.com
WEDGWOOD 01782 404045
wedgwood.com
WESTIN DESIGN 01484 421585
westin.co.uk
WEST ONE BATHROOMS
020 7720 9333
westonebathrooms.co.uk
WHARFSIDE 020 7253 3206
wharfside.co.uk
WOLF 0845 250 0010
subzero-wolf.co.uk

Y VES DELORME 020 7730 3435
yvesdelormeparis.com

Z ZARA HOME 020 7432 0040
zarahome.com
ZOFFANY 0844 543 4600
zoffany.com

• ALLORA	132
• ALNO	Outside Back Cover
• BRYAN TURNER KITCHENS	35
• CAESARSTONE	76
• CAPLE	72
• CHAMBER FURNITURE	10
• CHARLES YORKE FURNITURE	4-5
• CLIVE CHRISTIAN	Inside Front Cover & 3
• DAVONPORT	24-25
• DEKTON BY COSENTINO	8
• ELLIS FURNITURE	136
• ESPRESSO DESIGN	74
• FALMEC	132
• HERITAGE WARDROBE COMPANY	136
• LAURA ASHLEY BY ROPER RHODES	13
• MASTERCLASS KITCHENS	6-7
• MATKI	126-127
• OMEGA	18
• POLIFORM	21
• POLIFORM VARENNA	23
• PORCELANOSA	16
• QUOOKER	Inside Back Cover
• REED HARRIS	136
• SENA BY COSENTINO	96
• SMALLBONE OF DEVIZES	45
• SMEG	55
• SOLA KITCHENS	67
• STONE & CERAMIC WAREHOUSE	132
• THE ALBION BATH COMPANY	78
• TOM HOWLEY	14
• WEST ONE BATHROOMS	108

CLASSIFIED

- AMERICAN SHUTTERS
- CROYDEX
- CUE & CO OF LONDON
- DEVOL KITCHENS
- FUNKTIONAL KITCHENS
- GREAT BRITISH KITCHENS & INTERIORS LTD
- HICKS & HICKS
- JOHN LADBURY AND COMPANY
- OSMO
- PHILIP WATTS DESIGN
- QUERCUS BEDS
- THE ALBION BATH COMPANY
- THE HUNTER FAN COMPANY
- THE SUSSEX RANGE
- WARREN EVANS

KITCHENS



funktionalkitchens 

Crouch End
128 Crouch Hill
London N8 9DY
Telephone 020 8341 2020

Islington
42 Cross Street
London N1 2BA
Telephone 020 7359 4041

www.funktionalkitchens.co.uk



John Ladbury and Company
Unit 11 Alpha Business Park, Travellers Close,
Welham Green, Hertfordshire AL9 7NT

Telephone: 01707 262966
www.johnladbury.co.uk



For further information on EKBB
advertisers, and to request a brochure,
simply click on www.ekbb.co.uk/responses

KITCHENS



London & South East

Bespoke Kitchens

www.handmadekitchens.co.uk

Tel: 01959 532233

Visit our beautiful extensive showroom
& free car park



BATHROOMS

Flexi™
Fix
Screw or glue
Making it easier for you!

Cross over
to Flexi-Fix

simply screw
or glue

Re Fix

aligns to old holes



Screw Fix

to new holes



Glue Fix

to most surfaces



croydex
Think bathrooms

16 Fully co-ordinated ranges of bathroom accessories

+44 (0)1264 365881 | info@croydex.co.uk | www.croydex.com



BATHROOMS

What makes an Albion Bath unique?

Our exclusive bath material creates a difference you can feel....



Request your brochure on: 01255 831605
or go to: www.albionbathco.com

ALBION

Handmade bathrooms directly from our factory

Tubby Torre bath finished in Aged Copper

KITCHENS

HICKS & HICKS

The online interiors store for homes of distinction

FREE
DELIVERY ON
ALL ORDERS

BAR STOOL
£144

CALL FOR A BROCHURE: 01872 530761
www.hicksandhicks.com

IRONMONGERY



exquisite full length door handles by philip watts

www.philipwattsdesign.com

HEATED TOWEL RAILS

The **sussex**
Range

The original and finest 100% stainless steel towel rails & radiators
Please call for a brochure and your nearest dealer



Tel. 01444 831200 Fax. 01444 831900 info@jiseurope.co.uk
www.sussexrange.co.uk

To advertise in EKBB contact
Victoria Jennings on 01206 851117

BEDROOMS

Which?
members rated us within the
top 2 mattress retailers
(April 2014)

sale
now on



'Sunday' double bed ~~£475~~ **£375** **£550** with a mattress

13 stores | online | 020 7693 8988

Warren Evans

BEDROOMS



quercus
luxury handmade beds since 1983

Handmade by master craftsmen
to stand the test of time.

Money back promise • Free delivery & installation



quercusbeds.co.uk | 01777 869 669

Don't forget to mention EKBB
when replying to adverts

KITCHENS



KITCHENS · LIGHTING · FURNITURE · INTERIORS



Showroom: Unit 6 · Parsons Green Depot · 33-39 Parsons Green Lane · London SW6 4HH
Telephone: 0207 731 4728 · info@cueandco.com · www.cueandco.com

SHUTTERS

AMERICAN
SHUTTERS



20 years of experience
02392 597967
sales@americanshutters.co.uk

WASTE DISPOSAL

WASTE FORCE
The Power To Grind

Now
On Offer
£145

"My Waste Force disposer is essential to keeping my kitchen clean. Every home should have one!"

Waste-Force Disposal Units

- ✓ Gets rid of waste food fast
- ✓ Saves space, time and money
- ✓ Great performance, great value

Call now to order: 01256 636 509 www.waste-force.com

WOOD FINISHES

Wooden worktops...

...love TopOil

The Ultimate protection
for your wooden worktop

- > Resistant to common stains:
wine; beer; drinks and fruit juice.
- > Will not crack, peel or blister.
- > Highest coverage of any oil
on the market.



Call or visit
the web for
stockists.

+44 (0)1296 481 220
www.osmouk.com



osmo

The Essential Directory

Sponsored by



MATRIX KITCHENS KNIGHTSBRIDGE

10 Thurloe Place
Knightsbridge
London,
SW7 2RZ

Tel: 020 7808 0340
design@matrixkitchens.co.uk
www.matrixkitchens.co.uk

ESSENTIAL APPLIANCES



Sinks, Taps,
Cooker Hoods
& Accessories
1 Victor Way
Colney Street
St. Albans
AL2 2PL
Tel: 01923 635 200
www.blanco.co.uk

BLANCO
GERMANY



caple
www.caple.co.uk
0117 938 1900
sales@caple.co.uk

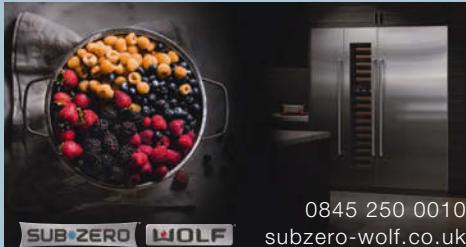


Amica
ZEN
No timers, no alarms
just cooking genius
- quietly.
www.amica-international.co.uk

**Looking for help
with your new Kitchen
or Bathroom?**

Kbsa
the home associations association
APPROVED

Go to www.kbsa.org.uk to download our
Consumer Guide & Charter - full of
invaluable hints and tips. You can also
select brochures from Neff, Miele
& many more...



SUB-ZERO WOLF
0845 250 0010
subzero-wolf.co.uk

ESSENTIAL SINKS & TAPS

**THE UNDERMOUNT
SINK SPECIALISTS**

See our full range at
www.the1810company.co.uk

Unit 7, Bromfield Commercial Park,
Mold, Flintshire CH7 1HE
t. +44 (0) 1978 660 770 f. +44 (0) 1978 660 771
e. sales@the1810company.co.uk

1810
THE 1810 COMPANY

V-ZUG
Premium Quality Kitchen
Appliances from Switzerland
www.vzug.co.uk
0843 289 5759 • info.uk@vzug.com

V ZUG
Premium
Swiss
Quality

Wine Storage
Corner Fridges
Drawer Fridges
Cold Rooms

norcool
cold by nature
www.norcool.co.uk



Tel: 0161 436 6280
www.franke.co.uk

FRANKE

LIEBHERR
Refrigeration Experts

COOELECTRIC LTD
National Salesline 08444 122 655
National Free Fax 0800 197 6591
Email sales@cooelectric.co.uk
Website www.myliebherr.co.uk



See more of
our stunning
kitchens at
tec-kitchens.com

01621 850115
info@tec-kitchens.com

tec-kitchens
Kitchens & Bathrooms to inspire you

Call 0161 436 6280 or
visit www.carron.com

CARRON
PHOENIX



GAGGENAU
Gaggenau Showroom
40 Wigmore Street,
London W1U 2RX
Consumer enquiries: 0844 892 8988
Dealer enquiries: 0844 892 8929
Website: www.gaggenau.co.uk

THE NEW SINK & TAP COLLECTION FROM
BRITAIN'S NO. 1 SINK MANUFACTURER.

RANGEmaster
sinks & taps
www.rangemastersinks.co.uk
Tel: 0870 789 6110



KWC
www.kwctaps.co.uk

KWC
FAUCETS

TO PROMOTE YOUR COMPANY IN THIS SECTION CALL VICTORIA JENNINGS ON 01206 851117 ext 222

ESSENTIAL BEDROOMS



Loddenkemper
Email: sales@euromobel.co.uk
T: 0845 658 1949 www.loddenkemper.de

ESSENTIAL KITCHENS



HOLME TREE
01530 564561
www.holmetree.co.uk

ESSENTIAL KITCHENS



MATRIX KITCHENS
KNIGHTSBRIDGE
10 Thurlow Place,
Knightsbridge,
London SW7 2BZ
Tel: 020 7808 0340
design@matrixkitchens.co.uk
www.matrixkitchens.co.uk

ESSENTIAL WORKTOPS



DECO GLAZE
Suppliers of the ultimate 10mm worktop
www.decoglaze.co.uk



www.unitsonline.co.uk
units online

FULL PROJECT MANAGEMENT & DESIGN SERVICE FOR
PROPERTY DEVELOPERS | SELF BUILD PROJECTS |
ARCHITECTS | COMMERCIAL ENTERPRISES | HOMEOWNERS

Lisa Melvin
DESIGN
01788 866996 | WWW.LISAMELVINDESIGN.CO.UK
f t e p YouTube



BUSHBOARD
Sensational surfaces for kitchens
To find out more go to www.bushboard.co.uk,
email help@bushboard.co.uk or call us on 01933 232 272



Sophisticated simplicity
poggen pohl
+SEGMENTO
Poggenpohl UK: 100 London Road, St Albans, Herts: AL1 1HX
poggenpohl.com
Tel: +44(0) 1727 730100



Natural Bed Company
www.naturalbedcompany.co.uk
Call us on: 0114 272 1984

pietra solid surface worktops
It's all in the detail
DERALAM
Deralam Laminates Ltd, West
Coast Park, Bradley Lane,
Standish, Wigan, WN6 0YR
National Sales Line: 01257 478540
Fax: 01257 478550
Email: sales@deralam.co.uk
www.deralam.co.uk



BA part of it
The choice you make, made better
Cooktown +44 (0) 28 8676 4600
Doncaster +44 (0) 1302 890555
mail@bacomponents.co.uk
www.byba.co.uk

The search for
the perfect range
cooker is over

britannia
Your life. Our passion
Contact us today on **0843 507 3431**
www.britanniainliving.co.uk

TOP QUALITY STAINLESS STEEL
Worktops Splashbacks Panels Doors
Tel 01442 82 6999
www.gecanderson.co.uk
GEC ANDERSON
the stainless steel specialists

RFK KITCHENS
KITCHENS
APPLIANCES
WORKSURFACES
INNOVATIONS
Call: 01788 547647
Unit 7, Cottage Leap, Rugby CV21 3XP
5 mins off junction 1 M6 & junction 19 of the M1
www.rfkkitchens.co.uk

Terence Ball Kitchens
A name you can trust

- High Quality Cabinets (All Egger Finishes)
- Bespoke Manufacturing
- Over 250 Door Ranges
- Unbeatable Industry Advice & Service
- Deliveries Throughout the UK

www.terenceballkitchens.co.uk
sales@terenceballkitchens.co.uk
01984 624640

ESSENTIAL SPLASHBACKS

UK SPLASHBACKS
Tailor made & fully fitted
toughened glass
splashbacks in any size,
shape & colour
Tel: 0800 232 1149
www.uksplashbacks.com

Beautiful British Furniture,
Designed with Care,
Fitted by Craftsmen.
Covering
Buckinghamshire
0844 579 6075
www.domuskitchensandbedrooms.co.uk
Domus
Kitchens and bedrooms

SCHMIDT KITCHENS
Schmidt Kitchens UK
01622 812123
www.schmidt-kitchens.com



Kit KEMP

Interior designer of Firmdale Hotels and mother to three daughters, Kit Kemp tells us all about her signature style and design inspirations

INTERVIEW SUSAN SPRINGATE | PHOTOS COURTESY OF FIRMDALE HOTELS

Self-taught interior designer Kit Kemp started her career with her own graphic design company, Barnacle, before meeting husband Tim and opening their first upmarket hotel, Dorset Square, in 1985. The couple now own a total of eight luxury boutique hotels in London including the Covent Garden Hotel and the Charlotte Street Hotel, while their New York property, the Crosby Street Hotel will be joined by a second on 56th Street later this year. Their most recent project, Ham Yard, opened to much acclaim last year in Soho. Kit has also designed ranges for Chelsea Textiles and Wedgwood. The couple live in a 1920s double-fronted townhouse near Hyde Park and have three grown up daughters.

Tell us about the Ham Yard Hotel. It has been our most ambitious project yet with 91 rooms and suites, 24 apartments, 13 shops, a spa, rooftop garden, theatre and a bowling alley which was imported from Texas. The hotel surrounds a public area where we planted oak trees for greenery, and it also has a 12ft Tony Cragg sculpture. Light and airy, the scale allowed us to create very different styles making it an adventure for all the senses.

What is central to your style? Comfort, colour and a carefree attitude – there should always be intrigue and fun.

What inspires you most? I love organic pieces and my inspiration will always be nature, but of course travelling ignites the senses for ideas on colour and texture.

Who are your major design influences? I love design. It doesn't matter if it's Egyptian 17th century or John Pawson, if it is well done, I love it. Hopefully you have your own central core and are not too influenced by anybody or anything.

Your own home must be amazing?

Actually, I'm so busy working on our hotels, I never get around to my own house. My house has a bit of a homemade look, which I like. I don't think homes should be too tailored. It's like baking a cake: I don't want it to look like I bought it – I want bits falling off the edge! A home should tell a story about who lives there and that's what my house is like.

Which textiles are you loving right now?

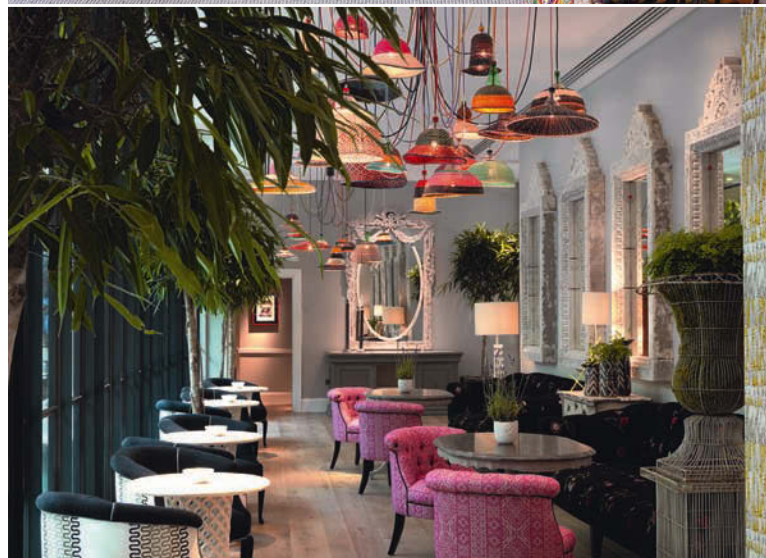
I think things are getting slightly more grand and tailored – there's a feeling of luxe at the moment. But that doesn't have to mean everything is gold and the sofa or bedding fabrics are so slippery you fall on the floor. You can use wonderful tailoring and fabrics like boiled wool, which is luxurious without being over the top.

Which up-and-coming artists have really caught your eye lately? Hermione Skye O'Hea. She made beautiful art work for us for the reception at Ham Yard Hotel.

Any tips for dinner parties? Candles. It has to be romantic. If the lights are low, everything looks amazing. At home, if you keep people waiting slightly, they drink a bit more and enjoy the food more! I like meals where you can just pick at things like avocado, tomato, mozzarella, and roasted peppers. Simple is always best.

What is it like working with your husband? We work quite autonomously. He couldn't bear to have me around all the time. We have the same sort of ideas at the end, but the way we arrive at the end is a different way. We do squabble over design. Now, I know when I can give way. But if you are working on something you are obsessing about, at least there will be a lot of soul.

©KBB firmdalehotels.com



Above top Each bedroom suite has its own mix of art, pattern and colour
Above Floor-to-ceiling Crittal windows let the light flow in to the foyer
Below Floral upholstery and quirky wallpaper adorn the library of the hotel. Kit's fabric designs – both silkscreens and digital prints designed for Christopher Farr and embroidered fabrics for Chelsea Textiles – were used for wallcoverings and upholstery throughout. All at the Ham Yard Hotel



OUT WITH THE TAP... IN WITH A Quooker®

SEE A WORKING QUOOKER IN OVER
1,000 KITCHEN SHOWROOMS NATIONWIDE.



A single tap for hot, cold and 100°C boiling water saving
time, water, energy and money.

Water Saving



Safe



Time Saving



Energy Efficient



TO FIND YOUR NEAREST SHOWROOM
CALL NOW 0808 102 2283
or visit www.quooker.co.uk/find-a-dealer

www.quooker.co.uk
info@quooker.co.uk

Quooker®
THE BOILING-WATER TAP

ALNO



ALNOSTAR PURE / ALNOSTAR SMARTLINE

DESIGN

INNOVATION

QUALITY

New ALNOSTAR PURE with special touch super matt laminate, feeling silky-smooth and eliminating unpleasant fingerprints. Part of the new 2015 **ALNO** kitchen collection.



ALNO kitchens are sold through John Lewis Department stores and selected Specialists nationwide.

Alton (Hampshire), Ayr, Balham (Greater London), Beaconsfield, Blackburn, Bristol, Bury St Edmunds, Chelmsford, Chiswick, Croydon (Greater London), Dorking, Eastbourne, Exeter, Findon (West Sussex), Horndean (Hampshire), Leeds, London W1, Maldon, Manchester (Altrincham, Prestwich), Newcastle under Lyme, Newport, Northampton, Nottingham, Pinner, Reading, Sevenoaks, St Albans, Sutton Coldfield, Surbiton (Greater London), Ulverston (Cumbria), Wirral.

For a copy of our brochure simply go on-line or call: 08700 433742

www.alnokitchens.co.uk



reddot design award
winner 2010